



## **Board of Trustees Meeting**

Arkansas State University System  
Friday, December 12, 2025, at 10:00 AM  
ASU System Office

### **Agenda**

#### **I. Call to Order**

#### **II. Approval of the Minutes of the Past Meetings: September 12, 2025**

#### **III. President's Report**

#### **IV. Agenda**

##### **A. Proposed ASU System Resolutions**

- 1. Resolution #25-43 approving the ASU System to establish a Relations with Foreign Adversaries Policy**
- 2. Resolution #25-44 approving the ASU System to proceed with the construction of the Indoor Baseball Development and Training Center at A-State**
- 3. Resolution #25-45 approving the ASU System to proceed with renovation of Kays Hall at A-State**
- 4. Resolution #25-46 approving the ASU System to borrow a sum of money sufficient to proceed with the construction of Equine Barn, Bovine Barn, and for the replacement the Dean B. Ellis Library Chiller at A-State**
- 5. Resolution #25-47 approving the ASU System to begin the process of issuing housing revenue bonds to finance capital improvements on the A-State campus**

##### **B. Proposed Arkansas State University (A-State) Resolutions**

- 1. Resolution #25-48 approving A-State to remove the allocation restriction of the existing \$10 per-credit-hour Technology Fee**
- 2. Resolution #25-49 approving A-State to grant a Temporary Construction Easement to the City of Jonesboro, Arkansas, for constructing and maintaining improvements on the pedestrian and bicycle infrastructure of Lot 1 of the University Trailer Park**
- 3. Resolution #25-50 approving A-State to grant a Temporary Easement to the City of Jonesboro, Arkansas, for constructing and maintaining improvements to pedestrian and bicycle infrastructure for sections of Lot 72 of the University Trailer Park**

**4.** Resolution #25-51 approving A-State to grant a Permanent Right-of-Way Easement to the City of Jonesboro, Arkansas, for constructing and maintaining improvements to pedestrian and bicycle infrastructure for sections of Lot 1 of the University Trailer Park

**5.** Resolution #25-52 approving A-State to grant a Temporary Construction Easement to the City of Jonesboro, Arkansas, to facilitate public infrastructure improvements along Johnson Avenue, adjacent to A-State

**C.** Proposed ASU-Mountain Home Resolution

**1.** Resolution #25-53 approving ASU-Mountain Home to grant a Utility Easement to the City of Mountain Home, Arkansas, to construct and maintain utility lines and necessary appurtenances upon part of a lot at the Intersection of Fuller and Terrington Street

**D.** Proposed ASU Three Rivers Resolution

**1.** Resolution #25-54 approving ASU Three Rivers to offer eight new Certificates of Proficiency

**E.** Proposed Henderson State Resolution

**1.** Resolution #25-55 approving Henderson State to grant a Permanent Right-of-Way Easement - Feaster Trail

**V.** Executive Session

**VI.** Approval of Personnel Actions

**VII.** Other Business

**A.** Election of Officers

**VIII.** Adjournment

**ARKANSAS STATE UNIVERSITY SYSTEM  
BOARD OF TRUSTEES**

A Resolution Naming the Boardroom in the Judd Hill Center in Jonesboro, Arkansas, after Pam Kail.

**WHEREAS**, the Arkansas State University System Board of Trustees recognizes the importance of the many contributions provided by individuals who have faithfully served the Arkansas State University System; and

**WHEREAS**, in 1991 Pam Kail began her service to Arkansas State University supporting the President and Board of Trustees with distinction; and

**WHEREAS**, Pam Kail, of Jonesboro, Arkansas, dedicated countless hours and endless amounts of energy to advancing the Arkansas State University System through her work as Executive Assistant to the President and Executive Secretary to the Board of Trustees; and

**WHEREAS**, Pam Kail performed her duties with excellence and dedication as a key member of the ASU System leadership team until her semi-retirement in June of 2025; and

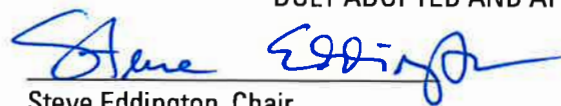
**WHEREAS**, Pam Kail created and set the standards for excellence of a board professional in the ASU System during her incredible tenure; and

**WHEREAS**, Pam Kail distinguished herself as a uniquely passionate advocate for Arkansas State University through her incredible fandom and support for A-State Athletics, which continues in an unfettered fashion to this day;

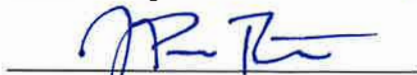
**NOW, THEREFORE, BE IT RESOLVED** by the Board of Trustees of the Arkansas State University System that the Boardroom in the Judd Hill Center in Jonesboro, Arkansas, is named for Pam Kail as a tribute to her notable service to the Arkansas State University System and in appreciation of her countless contributions and in deep gratitude for her untiring efforts on behalf of the ASU System, its students, faculty, staff, and friends.

**Pam Kail Boardroom**

DULY ADOPTED AND APPROVED this 12th day of December 2025



Steve Eddington, Chair



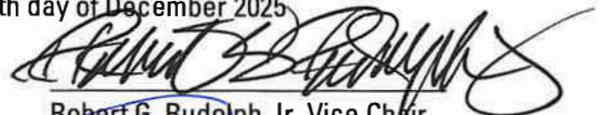
Paul Bowton, Secretary



Gary Harpole, Member



Jerry Morgan, Member



Robert G. Rudolph Jr, Vice Chair



Price Gardner, Member



Carole Farmer, Member



Brendan Kelly, Ph.D.  
ASU System President

**EXECUTIVE SUMMARY**

Contact Jeff Hankins (501) 660-1004

**ACTION ITEM:** The Arkansas State University System requests approval to establish a Relations with Foreign Adversaries Policy, pursuant to the Research and Education Protection Act of 2025.

**ISSUE:** The Board of Trustees must approve all System policies.

**BACKGROUND:**

- To ensure the protection of the Arkansas State University System institutions' research and educational systems from the malign influence of foreign adversaries, and in compliance with the Research and Education Protection Act of 2025, the System seeks to establish this Policy to provide guidance for the Board and System institutions when conducting certain activities with foreign adversaries, as defined by law.
- The policy includes:
  - The process for disclosing and seeking approval for receiving gifts equal to or greater than two hundred fifty thousand dollars (\$250,000) from a foreign adversary;
  - The process for disclosing and seeking approval to enter into contracts with a value equal to, or greater than, two hundred fifty thousand dollars (\$250,000) from a foreign adversary;
  - The process for disclosing and seeking approval to participate in a cultural exchange agreement with a foreign adversary;
  - The process for disclosing and seeking approval to enter into new, or renew, partnerships with a foreign instrumentality;
  - A prohibition on utilizing or contracting with entities domiciled in, or controlled or owned by, companies or other entities domiciled in foreign-adversary countries, and the requirement for institutions to conduct review of contractors for compliance with this policy prior to entering into relevant contracts.
- A copy of the proposed policy is attached.

**EXECUTIVE SUMMARY**

Contact: Jeff Hankins (501) 660-1004

**RECOMMENDATION/RESOLUTION:**

Be it resolved that the Arkansas State University System is approved to establish the Relations with Foreign Adversaries Policy, effective immediately.



Paul Rowton, Secretary



Steve Eddington, Chair

**EXECUTIVE SUMMARY**

Contact: Jeff Hankins (501) 660-1004

**ACTION ITEM:** The Arkansas State University System (System) requests approval to proceed with the construction of the Indoor Baseball Development and Training Center at Arkansas State University (A-State)

**ISSUE:** The Board of Trustees must approve all capital projects.

**BACKGROUND:**

- The 40,000 square-foot Indoor Baseball Development and Training Center at A-State will house a full-turf infield, three batting cages, three pitching tunnels, a weight room, multi-purpose meeting spaces, offices for coaching and support staff, and opportunities for premium seating.
- The capital project will be financed through Foundation or other private monies, using a construction loan of \$5,000,000, obtained through the Red Wolves Foundation in partnership with Centennial Bank. The university is pursuing private support, in order to lessen the overall necessary financing.
- A copy of the Indoor Baseball Development and Training Center is attached.

**RECOMMENDATION/RESOLUTION:**

Be it resolved that the Arkansas State University System is approved to proceed with the construction of the Indoor Baseball Development and Training Center at Arkansas State University.

  
\_\_\_\_\_  
Paul Rowton, Secretary

  
\_\_\_\_\_  
Steve Eddington, Chair

**EXECUTIVE SUMMARY**

Contact: Jeff Hankins (501) 660-1004

**ACTION ITEM:** The Arkansas State University System (System) requests approval to proceed with the renovation of Kays Hall at Arkansas State University (A-State).

**ISSUE:** The Board of Trustees must approve all capital projects.

**BACKGROUND:**

- This project will include the acquisition, construction, furnishing, and equipping of improvements to Kays Hall.
- The capital project will be financed through proceeds of \$13,691,729, obtained from bonds and other financing sources, and from institutional reserves of \$2,500,000.
- A copy of the Renovation of the Kays Hall Capital Project Form is attached.

**RECOMMENDATION/RESOLUTION:**

Be it resolved that the Arkansas State University System is approved to proceed with the renovation of Kays Hall at Arkansas State University.

  
\_\_\_\_\_  
Paul Rowton, Secretary

  
\_\_\_\_\_  
Steve Eddington, Chair

**EXECUTIVE SUMMARY**

Contact: Jeff Hankins (501) 660-1004

**ACTION ITEM:** The Arkansas State University System (System) requests approval to borrow a sum of money sufficient to proceed with the construction of an Equine Barn and a Bovine Barn, and for the replacement of the Dean B. Ellis Library Chiller at Arkansas State University (A-State).

**ISSUE:** The Board of Trustees must approve all requests for financing.

**BACKGROUND:**

- The System wishes to apply for a loan from the College Savings Bond Revolving Loan Fund, in order to proceed with the construction of an Equine Barn and a Bovine Barn, and for the replacement of the Dean B. Ellis Library Chiller at A-State. The loan, of \$2,483,535.64, is requested at an interest rate of approximately 0.2% for a term not to exceed 10 years. The projected debt service of \$251,093.64 will be paid from student tuition and fee revenue.
- This loan information must be sent to the Arkansas Division of Higher Education to determine its economic feasibility after the Board of Trustees adopts this resolution. This request meets the Arkansas Higher Education Coordinating Board requirement for feasibility.

**RECOMMENDATION/RESOLUTION:**

Be it resolved that the Arkansas State University System is approved to borrow \$2,483,535.64 at an estimated interest rate of 0.2% for a term not to exceed 10 years, in order to construct an Equine Barn and a Bovine Barn, and to replace the Dean B. Ellis Library Chiller at A-State.

  
\_\_\_\_\_  
Paul Rowton, Secretary

  
\_\_\_\_\_  
Steve Eddington, Chair



**EXECUTIVE SUMMARY**

Contact: Jeff Hankins (501) 660-1004

**ACTION ITEM:** The Arkansas State University System (the "ASU System") requests approval to begin the process of issuing housing system revenue bonds to finance capital improvements on the campus of Arkansas State University–Jonesboro ("ASU-Jonesboro").

**ISSUE:** The Board of Trustees of the ASU System (the "Board") is authorized under the Constitution and laws of the State of Arkansas, including particularly Act No. 62 of 1947, as amended (codified Ark. Code Ann. § 6-62-301, *et seq.*), to borrow money for the purpose of financing capital improvements.

**BACKGROUND:**

The ASU System has identified the need to finance capital improvements on the campus of ASU-Jonesboro, including particularly, without limitation, the acquisition, construction, furnishing, and equipping of improvements to Kays Hall (the "Project").


- The Board has determined that all, or a portion of, the costs of the Project should be financed through the issuance of the Board's Housing System Revenue Bonds (Jonesboro Campus) in the maximum aggregate principal amount of \$16,000,000 (the "Bonds").
- The ASU System will obtain, pursuant to Ark. Code Ann. § 6-62-306, the advice of the Arkansas Higher Education Coordinating Board as to the economic feasibility of the Project.

**RECOMMENDATION/RESOLUTION:**

Be it resolved that the Chair and Secretary of the Board; the President; the Associate Vice President, Finance and Administration; and the Vice Chancellor for Finance and Administration of ASU-Jonesboro are hereby authorized: (a) to present such information as they deem appropriate to the Arkansas Higher Education Coordinating Board in order to obtain its advice as to the economic feasibility of the Project and (b) to otherwise begin the process of issuing the Bonds.

Costs incurred in accomplishing the Project, prior to the issuance of the Bonds, will be paid from certain funds and accounts established and administered by ASU–Jonesboro. The Board intends to use proceeds from the issuance of the Bonds to reimburse such accounts. This Resolution shall constitute an "official intent" for the purpose of U.S. Treasury Regulation Section 1.150-2.

  
\_\_\_\_\_  
Paul Rowton, Secretary

  
\_\_\_\_\_  
Steve Eddington, Chair

## **EXECUTIVE SUMMARY**

Contact: Todd Shields (870) 972-3030

**ACTION ITEM:** Arkansas State University (A-State) requests approval to remove the allocation restriction of the existing \$10 per credit hour Technology Fee to allow flexible utilization in support of all Information Technology Services (ITS) infrastructure and operational needs that directly support students, faculty, and staff.

**ISSUE:** The Board of Trustees must approve all student fees and associated allocation methodologies.

## **BACKGROUND:**

- The \$10 per credit hour Technology Fee was last adjusted and approved by the ASU System Board of Trustees in May 2008 (Resolution 08-33).
- Since that time, the fee has continued to provide critical support for maintaining reliable and secure technology infrastructure across campus.
- The original allocation model (80% Information Infrastructure / 10% Instructional Technology / 10% Student Services) has become restrictive given the evolving nature of technology operations, increased software and contract costs, and the expansion of infrastructure supporting hybrid/online learning, cybersecurity, cloud computing, and modern endpoint management.
- The revised allocation framework will allow the University to more effectively manage and strategically invest these funds across areas of greatest institutional need including, but not limited to:
  - Network, server, and cloud infrastructure;
  - Cybersecurity systems and compliance tools;
  - Academic technology services and classroom support;
  - Student computing environments; and
  - Departmental technology replacements and lifecycle upgrades.
- This flexibility ensures that the Technology Fee continues to fulfill its original purpose of supporting reliable, modern, and secure information systems that benefit all A-State stakeholders.

**EXECUTIVE SUMMARY**

Contact: Todd Shields (870) 972-3030

**RECOMMENDATION/RESOLUTION:**

Be it resolved that Arkansas State University (A-State) is approved to remove the allocation restriction and update the allowable use of the existing \$10 per credit hour Technology Fee to allow flexible utilization in support of all Information Technology Services (ITS) infrastructure and operational needs that directly support students, faculty, and staff.



Paul Rowton, Secretary



Steve Eddington, Chair

**EXECUTIVE SUMMARY**

Contact: Russ Hannah (870) 972-2285

**ACTION ITEM:** The Arkansas State University System requests approval for Arkansas State University (A-State) to grant a *Temporary Construction Easement* to the City of Jonesboro, Arkansas, to construct and maintain pedestrian and bicycle infrastructure improvements upon part of Lot 1 of the University Trailer Park.

**ISSUE:** The ASU System Board of Trustees must approve the conveyance of easements affecting university property.

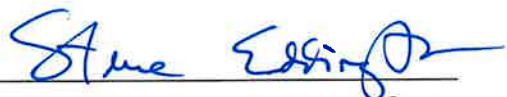
**BACKGROUND:**

- A-State owns real property known as the University Trailer Park, along the intersection of Stella Drive and Aggie Road, in Jonesboro, Craighead County, Arkansas. The City of Jonesboro has requested a temporary easement beginning at the northeast corner of Lot 1 for the purpose of constructing and maintaining pedestrian and bicycle infrastructure improvements.
- The easement, as shown and legally described in **Exhibit A (Legal Description)** and **Exhibit B (Easement Map)**, will provide the City of Jonesboro access for these construction and maintenance projects, while preserving ASU's property rights and ensuring that all activity remains consistent with university operations.
- The Chancellor of Arkansas State University and the President of the ASU System recommend approval of the proposed easement, as the project will enhance accessibility and safety for students, faculty, staff, and the surrounding community.

**RECOMMENDATION/RESOLUTION:**

Be it resolved that Arkansas State University is approved to grant a *Temporary Construction Easement* to the City of Jonesboro, Arkansas, across the ASU property known as the University Trailer Park, Lot 1, in Jonesboro, Craighead County, Arkansas, as described in the attached easement document. The Chancellor, or Chancellor's designee, is authorized to execute all documents necessary to carry out the intent of this resolution.

  
\_\_\_\_\_  
Paul Rowton, Secretary

  
\_\_\_\_\_  
Steve Eddington, Chair

**EXECUTIVE SUMMARY**

Contact: Russ Hannah (870) 972-2285

**ACTION ITEM:** The Arkansas State University System requests approval for Arkansas State University (A-State) to grant a *Temporary Construction Easement* to the City of Jonesboro, Arkansas, to construct and maintain pedestrian and bicycle infrastructure improvements upon part of Lot 72 of the University Trailer Park.

**ISSUE:** The ASU System Board of Trustees must approve the conveyance of easements affecting university property.


**BACKGROUND:**

- A-State owns real property known as the University Trailer Park, along the intersection of Stella Drive and Aggie Road, in Jonesboro, Craighead County, Arkansas. The City of Jonesboro has requested a temporary construction easement beginning at the northeast corner of Lot 72 for the purpose of constructing and maintaining pedestrian and bicycle infrastructure improvements.
- The easement, as shown and legally described in **Exhibit A (Legal Description)** and **Exhibit B (Easement Map)**, will provide the City of Jonesboro access for these construction and maintenance projects, while preserving ASU's property rights and ensuring that all activity remains consistent with university operations.
- The Chancellor of Arkansas State University and the President of the ASU System recommend approval of the proposed easement, as the project will enhance accessibility and safety for students, faculty, staff, and the surrounding community.

**RECOMMENDATION/RESOLUTION:**

Be it resolved that Arkansas State University is approved to grant a *Temporary Construction Easement* to the City of Jonesboro, Arkansas, across the ASU property known as the University Trailer Park, Lot 72, in Jonesboro, Craighead County, Arkansas, as described in the attached easement document. The Chancellor, or Chancellor's designee, is authorized to execute all documents necessary to carry out the intent of this resolution.

  
\_\_\_\_\_  
Paul Rowton, Secretary

  
\_\_\_\_\_  
Steve Eddington, Chair

**EXECUTIVE SUMMARY**

Contact: Russ Hannah (870) 972-2285

**ACTION ITEM:** The Arkansas State University requests approval for Arkansas State University (A-State) to grant a *Permanent Right-of-Way Easement* to the City of Jonesboro, Arkansas, to construct and maintain pedestrian and bicycle infrastructure improvements upon part of Lot 1 of the University Trailer Park.

**ISSUE:** The ASU System Board of Trustees must approve the conveyance of easements affecting university property.

**BACKGROUND:**

- A-State owns real property known as the University Trailer Park, along the intersection of Stella Drive and Aggie Road, in Jonesboro, Craighead County, Arkansas. The City of Jonesboro has requested a permanent right-of-way easement beginning at the northeast corner of Lot 1 for the purpose of constructing and maintaining pedestrian and bicycle infrastructure improvements.
- The easement, as shown and legally described in **Exhibit A (Legal Description)** and **Exhibit B (Easement Map)**, will provide the City of Jonesboro access for these construction and maintenance projects, while preserving ASU's property rights and ensuring that all activity remains consistent with university operations.
- The Chancellor of Arkansas State University and the President of the ASU System recommend approval of the proposed easement, as the project will enhance accessibility and safety for students, faculty, staff, and the surrounding community.

**RECOMMENDATION/RESOLUTION:**

Be it resolved that Arkansas State University is approved to grant a *Permanent Right-of-Way Easement* to the City of Jonesboro, Arkansas, across the ASU property known as the University Trailer Park, Lot 1, in Jonesboro, Craighead County, Arkansas, as described in the attached easement document. The Chancellor, or Chancellor's designee, is authorized to execute all documents necessary to carry out the intent of this resolution.

  
\_\_\_\_\_  
Paul Rowton, Secretary

  
\_\_\_\_\_  
Steve Eddington, Chair

**EXECUTIVE SUMMARY**

Contact: Russ Hannah (870)972-2285

**ACTION ITEM:** The Arkansas State University System requests approval for Arkansas State University (A-State) to grant a *Temporary Construction Easement* to the City of Jonesboro, Arkansas, to facilitate public infrastructure improvements along Johnson Avenue adjacent to the A-State campus.

**ISSUE:** The ASU System Board of Trustees must approve the conveyance of easements affecting university property.

**BACKGROUND:**

- A-State owns real property located along Johnson Avenue in Section 9, Township 14 North, Range 4 East, Craighead County, Arkansas. The City of Jonesboro has requested a temporary construction easement across two small areas of this property, totaling approximately 1,261 square feet, for the purpose of constructing and maintaining sidewalk and center turn-lane improvements.
- The easement areas, as shown and legally described in the attached **Exhibit A (Legal Description)** and **Exhibit B (Easement Map)**, will allow the city temporary access to facilitate construction activity while preserving A-State's ownership and long-term property rights. The project plans and related permit drawings, attached as **Exhibit C**, provide additional reference to the area and scope of work.
- The easement will expire upon completion of the construction project and does not convey permanent rights or title.
- The Chancellor of A-State and the President of the ASU System recommend approval of the proposed easement, as the project will enhance accessibility and safety for students, faculty, staff, and the surrounding community.

**RECOMMENDATION/RESOLUTION:**

Be it resolved that Arkansas State University is approved to grant a *Temporary Construction Easement* to the City of Jonesboro, Arkansas, across the A-State property located along Johnson Avenue, as described in the attached easement documents. The Chancellor, or Chancellor's designee, is authorized to execute all documents necessary to carry out the intent of this resolution.

  
\_\_\_\_\_  
Paul Rowton, Secretary

  
\_\_\_\_\_  
Steve Eddington, Chair



**EXECUTIVE SUMMARY**

Contact: Waynna Dockins (870) 508-6122

**ACTION ITEM:** The Arkansas State University System requests approval for Arkansas State University-Mountain Home (ASUMH) to grant a *Utility Easement* to the City of Mountain Home, Arkansas, to construct and maintain utility lines and necessary appurtenances thereto upon part of a lot located approximately at the intersection of Fuller Street and Terrington Street, Mountain Home, Arkansas.

**ISSUE:** The ASU System Board of Trustees must approve the conveyance of easements affecting university property.

**BACKGROUND:**

- ASUMH owns real property at the intersection of Fuller Street and Terrington Street in Mountain Home, Baxter County, Arkansas. The City of Mountain Home has requested a permanent utility easement for the purpose of constructing and maintaining utility lines and necessary appurtenances thereto, along with right of ingress and egress, to and from the same.
- The easement is shown and legally described in **Exhibit A (Legal Description)** and **Exhibit B (Easement Map)**.
- The Chancellor of ASUMH and the President of the ASU System recommend approval of the proposed easement, as the project will enhance accessibility and safety for students, faculty, staff, and the surrounding community.

**RECOMMENDATION/RESOLUTION:**

Be it resolved that Arkansas State University-Mountain Home is approved to grant a *Utility Easement* to the City of Mountain Home, Arkansas, across the Arkansas State University-Mountain Home real property, at the intersection of Fuller Street and Terrington Street in Mountain Home, Baxter County, Arkansas, as described in the attached easement document, and the Chancellor, or Chancellor's designee, is authorized to execute all documents necessary to carry out the intent of this resolution.

  
Paul Rowton, Secretary

  
Steve Eddington, Chair



**EXECUTIVE SUMMARY**

Contact: Pat Simms (501) 332-0245

**ACTION ITEM:** Arkansas State University Three Rivers (ASUTR) requests approval to offer eight new Certificates of Proficiency in 1) Automotive Drivability and Brakes, 2) Automotive Electrical and Chassis, 3) Construction Fundamentals, 4) Construction Residential Systems, 5) HVACR Fundamentals, 6) HVACR Residential Systems, 7) Welding Fundamentals, and 8) Welding Specialized Methods through the Malvern Career Center.

**ISSUE:** The Board of Trustees must approve the offering of any new degree.

**BACKGROUND:**

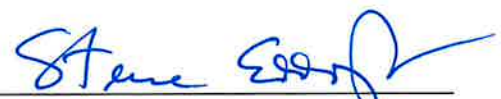
- The Malvern Career Center currently offers Certificates of Proficiency in Automotive Service Technology, Construction Technology, HVACR, and Welding. This proposal will create two Certificates of Proficiency in each of these programs. This will allow high school students to earn two credentials during their junior and senior years.
- Each proposed certificate is twelve credit hours.
- No new funding is required.

**RECOMMENDATION/RESOLUTION:**

Be it resolved that Arkansas State University Three Rivers is approved to offer Certificates of Proficiency in Automotive Drivability and Brakes, Automotive Electrical and Chassis, Construction Fundamentals, Construction Residential Systems, HVACR Fundamentals, HVACR Residential Systems, Welding Fundamentals, and Welding Specialized Methods through the Malvern Career Center, effective immediately.



Paul Rowton, Secretary



Steve Eddington, Chair

**EXECUTIVE SUMMARY**

Contact: Trey Berry, Chancellor (870) 230-5062

**ACTION ITEM:** The Arkansas State University System requests approval for Henderson State University (HSU) to grant a *Permanent Right-of-Way Easement* to the City of Arkadelphia, Clark County, Arkansas, for the construction and maintenance of Feaster Trail, a pedestrian trail running through the HSU campus between Mills Creek and the south side of the M.H. Russell Center.

**ISSUE:** The ASU System Board of Trustees must approve the conveyance of easements affecting university property.

**BACKGROUND:**

- In the 1980s, the City of Arkadelphia received a federal grant to build Feaster Trail, a portion of which runs through the HSU campus. In 2024, the City of Arkadelphia received an Arkansas Department of Transportation (ArDOT) grant for the rehabilitation of certain portions of Feaster Trail. During the ArDOT grant process, the parties discovered that there was no existing easement for the trail along the corridor running through HSU property. The ArDOT grant project cannot proceed until such an easement is granted.
- The easement, as shown and legally described in **Exhibit A (Legal Description)** and **Exhibit B (Easement Map)**, will provide access to the City of Arkadelphia for the construction and maintenance of the trail, while preserving HSU's property rights and operations.
- The Chancellor of HSU and the President of the ASU System recommend approval of the proposed easement, as the trail benefits students, faculty, staff, and the surrounding community.

**RECOMMENDATION/RESOLUTION:**

Be it resolved that Henderson State University is approved to grant a *Permanent Right-of-Way Easement* to the City of Arkadelphia, Clark County, Arkansas, for the construction and maintenance of Feaster Trail, as described in the attached easement document. The Chancellor, or Chancellor's designee, is authorized to execute all documents necessary to carry out the intent of this resolution.

  
\_\_\_\_\_  
Paul Rowton, Secretary

  
\_\_\_\_\_  
Steve Eddington, Chair



Policy on Relations with Foreign Adversaries	
Policy Section: [To Be Assigned] Policy Number: [To Be Assigned]	Effective Date: XX/XX/XXXX

## 1. Policy Statement

The Arkansas State University System (the “System”) Board of Trustees (the “Board”) seeks to establish a formal policy governing the occurrence of a System institution being offered any gift, offered or proposed to enter into a future contract, requested to participate in certain cultural exchange agreements, or contract with companies or other entities that host or operate software or software platforms, with a foreign adversary.

## 2. Definitions

- a. “Affiliate organization” means an entity under the control of or established for the benefit of an organization addressed herein including a foreign adversary.
- b. “Agreement” means a written or spoken statement of mutual interest in a cultural exchange agreement or an academic or a research collaboration with a foreign adversary or an affiliate organization of a foreign adversary.
- c. “Contract” means an agreement for the acquisition by purchase, lease, or barter of property or services for the direct benefit or use of either of the contracting parties.
- d. “Cultural Exchange Agreement” means an agreement between a foreign adversary and an institution of higher education that aims to promote cultural or intellectual relations.
- e. “Foreign Adversary” means the People’s Republic of China, the Russian Federation, the Islamic Republic of Iran, the Democratic People’s Republic of Korea, the Republic of Cuba, the Bolivarian Republic of Venezuela, the Syrian Arab Republic, and a foreign terrorist organization as designated by the United States Secretary of State in accordance with federal law.
- f. “Foreign instrumentality” means an agency, bureau, ministry, component, institution,

association, or any other legal, commercial, or business organization, corporation, firm, or entity that is substantially owned, controlled, sponsored, commanded, managed, or dominated by a foreign government as defined in Ark. Code Ann. § 6-60-1602.

- g. “Gift” means a gift, an endowment, an award, a donation of money or property of any kind, any combination of the listed items, including a conditional or unconditional pledge of any the listed items.
- h. “Institution” means an institution of higher education within the Arkansas State University System.
- i. “Partnerships” means a faculty or student exchange program, study abroad program, matriculation program, recruiting program, or dual degree program.
- j. “Research” means a scientific investigation or development that involves technologies, designs, or technical data considered sensitive enough to potentially impact national security and therefore requires strict controls on export or transfer to foreign entities.

### **3. Gifts**

- a. If an institution is offered a direct or indirect gift that is equal to or greater than two hundred fifty thousand dollars (\$250,000) from a foreign adversary or an intermediary or affiliate organization of a foreign adversary, the institution shall disclose the proposed gift to the Board prior to accepting or agreeing to accept the gift.
- b. In consultation with the System General Counsel’s office, the disclosure shall comply with Ark. Code Ann. §6-60-1605 and any other applicable law.
- c. Within thirty (30) days of receiving the disclosure, the Board will issue a final decision on whether and under what conditions the institution may receive the gift, which will be conferred by a formal Board resolution. The Board will reject a gift from a foreign adversary unless there is an overwhelming state or national interest in accepting the gift.

### **4. Contracts**

- a. If an institution is offered or proposes a direct or indirect contract with a value equal to or greater than two hundred fifty thousand dollars (\$250,000) from or with a foreign adversary or an intermediary or affiliate organization of a foreign adversary, the institution shall disclose the proposed contract to the Board prior to entering into the contract.

- b. In consultation with the System General Counsel's office, the disclosure shall comply with Ark. Code Ann. §6-60-1607 and any other applicable law.
- c. In consultation with the System General Counsel's office, the disclosure shall comply with Ark. Code Ann. §6-60-1607 and any other applicable law.
- d. Within thirty (30) days of receiving the disclosure, the Board will issue a final decision on whether and under what conditions the institution may enter into the contract, which will be conferred by a formal Board resolution. The Board will reject a contract with a foreign adversary unless there is an overwhelming state or national interest in accepting or entering the contract.

## **5. Cultural Exchange Agreements**

- a. An institution shall not participate in a cultural exchange agreement with a foreign adversary or entity controlled by a foreign adversary unless the institution shows the cultural exchange agreement addresses an overwhelmingly underaddressed state or national need, avoids constraining the freedom of contract of the public entity, avoids allowing the curricula or values of the program in the state to be directed, controlled, or influenced by the foreign adversary, and avoids promoting an agenda detrimental to the safety or security of the state, residents of the state, and the United States.
- b. Prior to the execution of a cultural exchange agreement with a foreign adversary, the substance of the cultural exchange agreement must be shared with the Department of Inspector General, who will assess whether the cultural exchange agreement is detrimental to the safety or security of the state, the United States, or residents of the state, in which case the institution may not enter into the cultural exchange agreement.
- c. In consultation with the System General Counsel's office, the institution shall submit the disclosure referenced above in Section 5 (B), which shall comply with Ark. Code Ann. §6-60-1609 and any other applicable law.

## **6. Research Partnerships**

- a. An institution shall only enter into a new partnership or renew an existing partnership with a foreign instrumentality if the institution maintains sufficient structural safeguards to protect the intellectual property of the institution.
- b. Prior to entering into a new partnership or renew an existing partnership with a foreign instrumentality, in consultation with the System General Counsel's office, the institution shall submit a disclosure to the Board which shall comply with Ark. Code Ann. §6-60-1612 and any other applicable law.

- c. The Board will notify the institution if the Board determines the partnership meets the safeguards required by Ark. Code Ann. §6-60-1612.

## **7. Foreign Adversary Software**

- a. Institutions are prohibited from utilizing or contracting with entities domiciled in, controlled or owned by companies or other entities domiciled in foreign adversary countries that host, operate, or own software or software programs.
- b. Prior to contracting for software and software platforms, an institution shall conduct a review of any selected contractor to ensure compliance with Ark. Code Ann. §6-60-1615.

# ASU System

## Capital Project Proposal Form

In accordance with Board policy, the term "capital project" means a new construction, renovation, or remodeling project with a projected cost exceeding \$1,000,000. Campus officials shall complete a Capital Project proposal form and submit it to the President for review and recommendations. The President will submit Capital Project proposals to the Board of Trustees for approval. Forms should be submitted electronically to the System Vice President for Finance.

<b>Institution</b>	Arkansas State University	<b>Date</b>	12/12/25
<b>Project Name</b>	Indoor Baseball Development and Training Center		

**Project Description (in detail)**

Arkansas State University requests approval to proceed with construction and financing for an Indoor Baseball Development and Training Center. This 40,000 square-foot facility will house a full-turf infield, three batting cages, three pitching tunnels, a weight room, multi-purpose meeting spaces, coaching- and support- staff offices, and opportunities for premium seating. Construction costs will be funded through donor cash contributions or offset by in-kind contributions that would lessen the necessary financing.

<b>Estimated Date of Commencement</b>	01/01/26
<b>Estimated Date of Completion</b>	12/31/26
<b>Total Project Cost Estimate</b>	\$5,000,000

**Please provide the detail of cost estimate below:**

	<b>Estimated Project Cost</b>
Construction (include cost of built-in equipment)	\$ 5,000,000
Architect/Engineer Fees	-
Contingencies (not to exceed 10% of Construction and A&E)	-
Land Purchases	-
Movable Equipment and Furniture	-
<b>Total Cost of Project</b>	<b>\$ 5,000,000</b>

**Please provide details of planned sources of funding:**

	<b>Amount</b>	<b>Percentage</b>
General Improvement	-	0.0%
Institutional Reserves	-	0.0%
Institutional Operating Funds	-	0.0%
Federal Grant Funds	-	0.0%
Special Revenue Funds	-	0.0%
Foundation or Other Private Monies	\$ 5,000,000.00	100.0%
Loan Proceeds (if approved)	-	0.0%
<b>Total Proposed Funding</b>	<b>\$ 5,000,000</b>	100.0%

**Notes**

This project will be financed through the Red Wolves Foundation (RWF), in partnership with Centennial Bank. The annual RWF commitment to the university shall be a loan repayment contingency.

# ASU System

## Capital Project Proposal Form

In accordance with Board policy, the term "capital project" means a new construction, renovation, or remodeling project with a projected cost exceeding \$1,000,000. Campus officials shall complete a Capital Project proposal form and submit it to the President for review and recommendations. The President will submit Capital Project proposals to the Board of Trustees for approval. Forms should be submitted electronically to the System Vice President for Finance.

<b>Institution</b>	Arkansas State University	<b>Date</b>	12/12/25
<b>Project Name</b>	Kays Hall Renovation		
<b>Project Description (in detail)</b>	Arkansas State University requests approval to proceed with construction and financing of capital improvements, including the acquisition, construction, furnishing and equipping of improvements to Kays Hall.		

<b>Estimated Date of Commencement</b>	05/15/26
<b>Estimated Date of Completion</b>	06/30/27
<b>Total Project Cost Estimate</b>	\$16,191,729

Please provide the detail of cost estimate below:

	Estimated Project Cost
Construction (include cost of built-in equipment)	\$ 14,738,920
Architect/Engineer Fees	1,452,808
Contingencies (not to exceed 10% of Construction and A&E)	-
Land Purchases	-
Movable Equipment and Furniture	-
<b>Total Cost of Project</b>	<b>\$ 16,191,728</b>

Please provide details of planned sources of funding:

	Amount	Percentage
General Improvement	-	0.0%
Institutional Reserves	\$ 2,500,000.00	15.4%
Institutional Operating Funds	-	0.0%
Federal Grant Funds	-	0.0%
Special Revenue Funds	-	0.0%
Foundation or Other Private Monies	-	0.0%
Loan Proceeds (if approved)	13,691,729	84.6%
<b>Total Proposed Funding</b>	<b>\$ 16,191,729</b>	100.0%

**Notes**

The capital project will be financed through proceeds obtained from bonds and other financing sources, including institutional reserves.



## EXHIBIT A

# TEMPORARY CONSTRUCTION EASEMENT

KNOW ALL MEN BY THESE PRESENTS: (01-144164-02700)

That STATE OF ARKANSAS, hereinafter referred to as Grantor (whether one or more), does hereby dedicate, grant and convey unto the Public, and that the **CITY OF JONESBORO**, a Municipal Corporation of the State of Arkansas, hereinafter referred to as Grantee, does hereby accept on behalf of the public, for use as a temporary construction easement across the following described real property in Craighead County, State of Arkansas, to-wit:

PART OF LOT 1 OF UNIVERSITY TRAILER PARK, JONESBORO, CRAIGHEAD COUNTY, ARKANSAS,  
BEING MORE PARTICULARLY DESCRIBED AS FOLLOWS:

BEGINNING AT THE NORTHEAST CORNER OF LOT 1 OF UNIVERSITY TRAILER PARK, JONESBORO, CRAIGHEAD COUNTY, ARKANSAS; THENCE SOUTH 00°41'58" WEST, 16.09 FEET; THENCE NORTH 82°28'45" WEST, 16.51 FEET TO THE POINT OF BEGINNING PROPER; THENCE SOUTH 19°47'04" EAST, 13.56 FEET; THENCE SOUTH 68°00'15" WEST, 186.82 FEET; THENCE SOUTH 80°18'57" WEST, 72.21 FEET; THENCE NORTH 00°48'03" EAST, 15.42 FEET; THENCE NORTH 71°39'54" EAST, 69.48 FEET TO A POINT ON A CURVE TO THE RIGHT; THENCE NORTHEASTERLY ALONG SAID CURVE WITH A CENTRAL ANGLE OF 01°46'12", A RADIUS OF 5922.53 FEET, 182.96 FEET TO A POINT THAT BEARS NORTH 71°38'55" EAST, 182.95 FEET FROM SAID LAST POINT TO THE POINT OF BEGINNING PROPER, CONTAINING 0.12 ACRES (5,110 SQ. FT.), MORE OR LESS, SUBJECT TO ALL RIGHTS-OF-WAY AND EASEMENTS OF RECORD.

This easement and right-of-way is for the purpose of constructing and maintaining pedestrian and bicycle infrastructure improvements. Any other use of this area, other than by record owners, shall only be granted by record owners, but they are not precluded from using or granting other use, so long as same does not interfere unreasonably with the express purpose intended.

This grant of easement and right-of-way shall be binding upon the heirs, successors, administrators and assigns of the grantors.

IN WITNESS WHEREOF, the grantors have executed this instrument on the \_\_\_\_\_ day of \_\_\_\_\_, 20\_\_\_\_.

**Owner Info**

**BY:**

Signature:\_\_\_\_\_.

Name:\_\_\_\_\_.

Title:\_\_\_\_\_.

**ACKNOWLEDGMENT**

**STATE OF**\_\_\_\_\_.

**COUNTY OF**\_\_\_\_\_.

On this day before me, the undersigned officer, personally appeared\_\_\_\_\_,  
to me well known to be the person whose name is subscribed to the foregoing instrument, and acknowledged  
that he had executed the same for the purpose therein stated and set forth.

WITHESS my hand and seal this \_\_\_\_\_day of \_\_\_\_\_, 20\_\_\_\_.

Notary Public (Signature):\_\_\_\_\_.

My Commission Expires:\_\_\_\_\_.

[illegible]

## EXHIBIT A

# TEMPORARY CONSTRUCTION EASEMENT

KNOW ALL MEN BY THESE PRESENTS: (01-144164-09800)

That **STATE OF ARKANSAS**, hereinafter referred to as Grantor (whether one or more), does hereby dedicate, grant and convey unto the Public, and that the **CITY OF JONESBORO**, a Municipal Corporation of the State of Arkansas, hereinafter referred to as Grantee, does hereby accept on behalf of the public, for use as a temporary construction easement across the following described real property in Craighead County, State of Arkansas, to-wit:

PART OF LOT 72 OF UNIVERSITY TRAILER PARK, JONESBORO, CRAIGHEAD COUNTY, ARKANSAS, BEING MORE PARTICULARLY DESCRIBED AS FOLLOWS:

BEGINNING AT THE NORTHEAST CORNER OF LOT 72 OF UNIVERSITY TRAILER PARK, JONESBORO, CRAIGHEAD COUNTY, ARKANSAS; THENCE SOUTH 00°41'52" WEST, 4.80 FEET TO THE POINT OF BEGINNING PROPER; THENCE CONTINUE SOUTH 00°41'52" WEST, 15.77 FEET; THENCE SOUTH 69°55'19" WEST, 34.65 FEET; THENCE NORTH 20°34'27" WEST, 14.18 FEET; THENCE NORTH 69°06'42" EAST, 40.37 FEET TO THE POINT OF BEGINNING PROPER, CONTAINING 0.01 ACRES (542 SQ. FT.), MORE OR LESS, SUBJECT TO ALL RIGHTS-OF-WAY AND EASEMENTS OF RECORD.

This easement and right-of-way is for the purpose of constructing and maintaining pedestrian and bicycle infrastructure improvements. Any other use of this area, other than by record owners, shall only be granted by record owners, but they are not precluded from using or granting other use, so long as same does not interfere unreasonably with the express purpose intended.

This grant of easement and right-of-way shall be binding upon the heirs, successors, administrators and assigns of the grantors.

IN WITNESS WHEREOF, the grantors have executed this instrument on the \_\_\_\_\_ day of \_\_\_\_\_, 20\_\_\_\_.

**Owner Info**

**BY:**

Signature:\_\_\_\_\_.

Name:\_\_\_\_\_.

Title:\_\_\_\_\_.

**ACKNOWLEDGMENT**

**STATE OF** \_\_\_\_\_.

**COUNTY OF** \_\_\_\_\_.

On this day before me, the undersigned officer, personally appeared\_\_\_\_\_,  
to me well known to be the person whose name is subscribed to the foregoing instrument, and acknowledged  
that he had executed the same for the purpose therein stated and set forth.

WITHESS my hand and seal this \_\_\_\_\_ day of \_\_\_\_\_, 20\_\_\_\_.

Notary Public (Signature):\_\_\_\_\_.

My Commission Expires:\_\_\_\_\_.

[illegible]

## EXHIBIT A

# PERMANENT RIGHT-OF-WAY EASEMENT

KNOW ALL MEN BY THESE PRESENTS: (01-144164-02700)

That, **STATE OF ARKANSAS**, hereinafter referred to as Grantor (whether one or more), does hereby dedicate, grant and convey unto the Public, and that the **CITY OF JONESBORO**, a Municipal Corporation of the State of Arkansas, hereinafter referred to as Grantee, does hereby accept on behalf of the public, for use as a permanent right-of-way across the following described real property in Craighead County, State of Arkansas, to-wit:

PART OF LOT 1 OF UNIVERSITY TRAILER PARK, JONESBORO, CRAIGHEAD COUNTY, ARKANSAS, BEING MORE PARTICULARLY DESCRIBED AS FOLLOWS:

BEGINNING AT THE NORTHEAST CORNER OF LOT 1 OF UNIVERSITY TRAILER PARK, JONESBORO, CRAIGHEAD COUNTY, ARKANSAS; THENCE SOUTH 00°41'58" WEST, 16.09 FEET; THENCE NORTH 55°13'13" WEST, 8.81 FEET TO A POINT ON A CURVE TO THE LEFT; THENCE SOUTHWESTERLY ALONG SAID CURVE WITH A CENTRAL ANGLE OF 01°51'45", A RADIUS OF 5922.53 FEET, 192.53 FEET TO A POINT THAT BEARS SOUTH 71°41'42" WEST, 192.52 FEET FROM SAID LAST POINT; THENCE SOUTH 71°39'54" WEST, 69.48 FEET; THENCE NORTH 00°48'03" EAST, 8.83 FEET; THENCE NORTH 71°43'27" EAST, 269.64 FEET TO THE POINT OF BEGINNING, CONTAINING 0.05 ACRES (2,150 SQ. FT.), MORE OR LESS, SUBJECT TO ALL RIGHTS-OF-WAY AND EASEMENTS OF RECORD.

This easement and right-of-way is for the purpose of constructing and maintaining pedestrian and bicycle infrastructure improvements. Any other use of this area, other than by record owners, shall only be granted by record owners, but they are not precluded from using or granting other use, so long as same does not interfere unreasonably with the express purpose intended.

This grant of easement and right-of-way shall be binding upon the heirs, successors, administrators and assigns of the grantors.

IN WITNESS WHEREOF, the grantors have executed this instrument on the \_\_\_\_\_ day of 20\_\_\_\_\_.

**Owner Info**

**BY:**

Signature:\_\_\_\_\_.

Name:\_\_\_\_\_.

Title:\_\_\_\_\_.

**ACKNOWLEDGMENT**

**STATE OF** \_\_\_\_\_.

**COUNTY OF** \_\_\_\_\_.

On this day before me, the undersigned officer, personally appeared \_\_\_\_\_,  
to me well known to be the person whose name is subscribed to the foregoing instrument, and acknowledged  
that he had executed the same for the purpose therein stated and set forth.

WITHESS my hand and seal this \_\_\_\_\_ day of \_\_\_\_\_, 20 \_\_\_\_.

Notary Public (Signature): \_\_\_\_\_.

My Commission Expires: \_\_\_\_\_.



[illegible]

## TEMPORARY CONSTRUCTION EASEMENT

**KNOW ALL MEN BY THESE PRESENTS:** (01-144094-00200)

That ARKANSAS STATE UNIVERSITY, hereinafter referred to as Grantor (whether one or more), does hereby dedicate, grant and convey unto the Public, and that the **CITY OF JONESBORO**, a Municipal Corporation of the State of Arkansas, hereinafter referred to as Grantee, does hereby accept on behalf of the public, for use as a temporary construction easement across the following described real property in Craighead County, State of Arkansas, to-wit:

A PART OF SOUTHEAST QUARTER OF THE SOUTHWEST QUARTER OF SECTION 09, TOWNSHIP 14 NORTH, RANGE 04 EAST, JONESBORO, CRAIGHEAD COUNTY, ARKANSAS, BEING MORE PARTICULARLY DESCRIBED AS FOLLOWS:

BEGINNING AT THE SOUTHWEST CORNER OF SECTION 09, TOWNSHIP 14 NORTH, RANGE 04 EAST, JONESBORO, CRAIGHEAD COUNTY, ARKANSAS; THENCE NORTH 00°00'00" EAST, 581.63 FEET; THENCE NORTH 90°00'00" EAST, 2410.19 FEET TO THE POINT OF BEGINNING PROPER; THENCE NORTH 66°30'29" EAST, 33.08 FEET; THENCE SOUTH 58°39'52" WEST, 35.61 FEET; THENCE NORTH 00°51'29" EAST, 5.33 FEET TO THE POINT OF BEGINNING PROPER, CONTAINING 80 SQ. FT., MORE OR LESS, SUBJECT TO ALL RIGHTS-OF-WAY AND EASEMENTS OF RECORD.

A PART OF SOUTHEAST QUARTER OF THE SOUTHWEST QUARTER OF SECTION 09, TOWNSHIP 14 NORTH, RANGE 04 EAST, JONESBORO, CRAIGHEAD COUNTY, ARKANSAS, BEING MORE PARTICULARLY DESCRIBED AS FOLLOWS:

BEGINNING AT THE SOUTHWEST CORNER OF SECTION 09, TOWNSHIP 14 NORTH, RANGE 04 EAST, JONESBORO, CRAIGHEAD COUNTY, ARKANSAS; THENCE NORTH 00°00'00" EAST, 581.63 FEET; THENCE NORTH 90°00'00" EAST, 2410.19 FEET; THENCE NORTH 66°30'29" EAST, 33.08 FEET; THENCE NORTH 58°39'52" EAST, 180.00 FEET TO THE POINT OF BEGINNING PROPER; THENCE NORTH 31°21'25" WEST, 8.36 FEET; THENCE NORTH 58°38'35" EAST, 143.60 FEET; THENCE SOUTH 00°48'45" WEST, 9.93 FEET; THENCE SOUTH 58°39'52" WEST, 138.31 FEET TO THE POINT OF BEGINNING PROPER, CONTAINING 1,181 SQ. FT., MORE OR LESS, SUBJECT TO ALL RIGHTS-OF-WAY AND EASEMENTS OF RECORD.

This easement and right-of-way is for the purpose of constructing and maintaining sidewalk and center turnlane improvements. Any other use of this area, other than by record owners, shall only be granted by record owners, but they are not precluded from using or granting other use, so long as same does not interfere unreasonably with the express purpose intended.

This grant of easement and right-of-way shall be binding upon the heirs, successors, administrators and assigns of the grantors.

IN WITNESS WHEREOF, the grantors have executed this instrument on the \_\_\_\_\_ day of \_\_\_\_\_, 20\_\_\_\_.

**Owner Info  
BY:**

Signature:\_\_\_\_\_.

Name:\_\_\_\_\_.

Title:\_\_\_\_\_.

## ACKNOWLEDGME

NT STATE OF \_\_\_\_\_.

**COUNTY OF \_\_\_\_\_.**

On this day before me, the undersigned officer, personally appeared\_\_\_\_\_, to me well known to be the person whose name is subscribed to the foregoing instrument, and acknowledged that he had executed the same for the purpose therein stated and set forth.

WITHESS my hand and seal this \_\_\_\_\_day of \_\_\_\_\_, 20\_\_\_\_.

Notary Public (Signature):\_\_\_\_\_.

My Commission Expires:\_\_\_\_\_.

LEGAL DESCRIPTION:

TEMPORARY CONSTRUCTION EASEMENT 1:

A PART OF SOUTHEAST QUARTER OF THE SOUTHWEST QUARTER OF SECTION 09, TOWNSHIP 14 NORTH, RANGE 04 EAST, JONESBORO, CRAIGHEAD COUNTY, ARKANSAS, BEING MORE PARTICULARLY DESCRIBED AS FOLLOWS:

BEGINNING AT THE SOUTHWEST CORNER OF SECTION 09, TOWNSHIP 14 NORTH, RANGE 04 EAST, JONESBORO, CRAIGHEAD COUNTY, ARKANSAS; THENCE NORTH 00°00'00" EAST, 581.63 FEET; THENCE NORTH 90°00'00" EAST, 2410.19 FEET TO THE POINT OF BEGINNING PROPER; THENCE NORTH 66°30'29" EAST, 33.08 FEET; THENCE SOUTH 58°39'52" WEST, 35.61 FEET; THENCE NORTH 00°51'29" EAST, 5.33 FEET TO THE POINT OF BEGINNING PROPER, CONTAINING 80 SQ. FT., MORE OR LESS, SUBJECT TO ALL RIGHTS-OF-WAY AND EASEMENTS OF RECORD.

TEMPORARY CONSTRUCTION EASEMENT 2:

A PART OF SOUTHEAST QUARTER OF THE SOUTHWEST QUARTER OF SECTION 09, TOWNSHIP 14 NORTH, RANGE 04 EAST, JONESBORO, CRAIGHEAD COUNTY, ARKANSAS, BEING MORE PARTICULARLY DESCRIBED AS FOLLOWS:

BEGINNING AT THE SOUTHWEST CORNER OF SECTION 09, TOWNSHIP 14 NORTH, RANGE 04 EAST, JONESBORO, CRAIGHEAD COUNTY, ARKANSAS; THENCE NORTH 00°00'00" EAST, 581.63 FEET; THENCE NORTH 90°00'00" EAST, 2410.19 FEET; THENCE NORTH 66°30'29" EAST, 33.08 FEET; THENCE NORTH 58°39'52" EAST, 180.00 FEET TO THE POINT OF BEGINNING PROPER; THENCE NORTH 31°21'25" WEST, 8.36 FEET; THENCE NORTH 58°38'35" EAST, 143.60 FEET; THENCE SOUTH 00°48'45" WEST, 9.93 FEET; THENCE SOUTH 58°39'52" WEST, 138.31 FEET TO THE POINT OF BEGINNING PROPER, CONTAINING 1,181 SQ. FT., MORE OR LESS, SUBJECT TO ALL RIGHTS-OF-WAY AND EASEMENTS OF RECORD.

LINE TABLE:

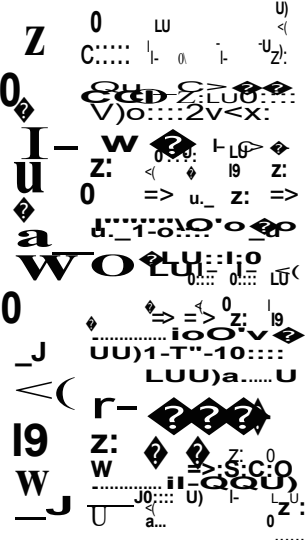
LINE#	DIRECTION	LENGTH
L1	N66°30'29"E	33.08'
L2	S58°39'52"W	35.61'
L3	N00°51'29"E	5.33'
L4	N31°21'25"W	8.36'
LS	S00°48'45"W	9.93'



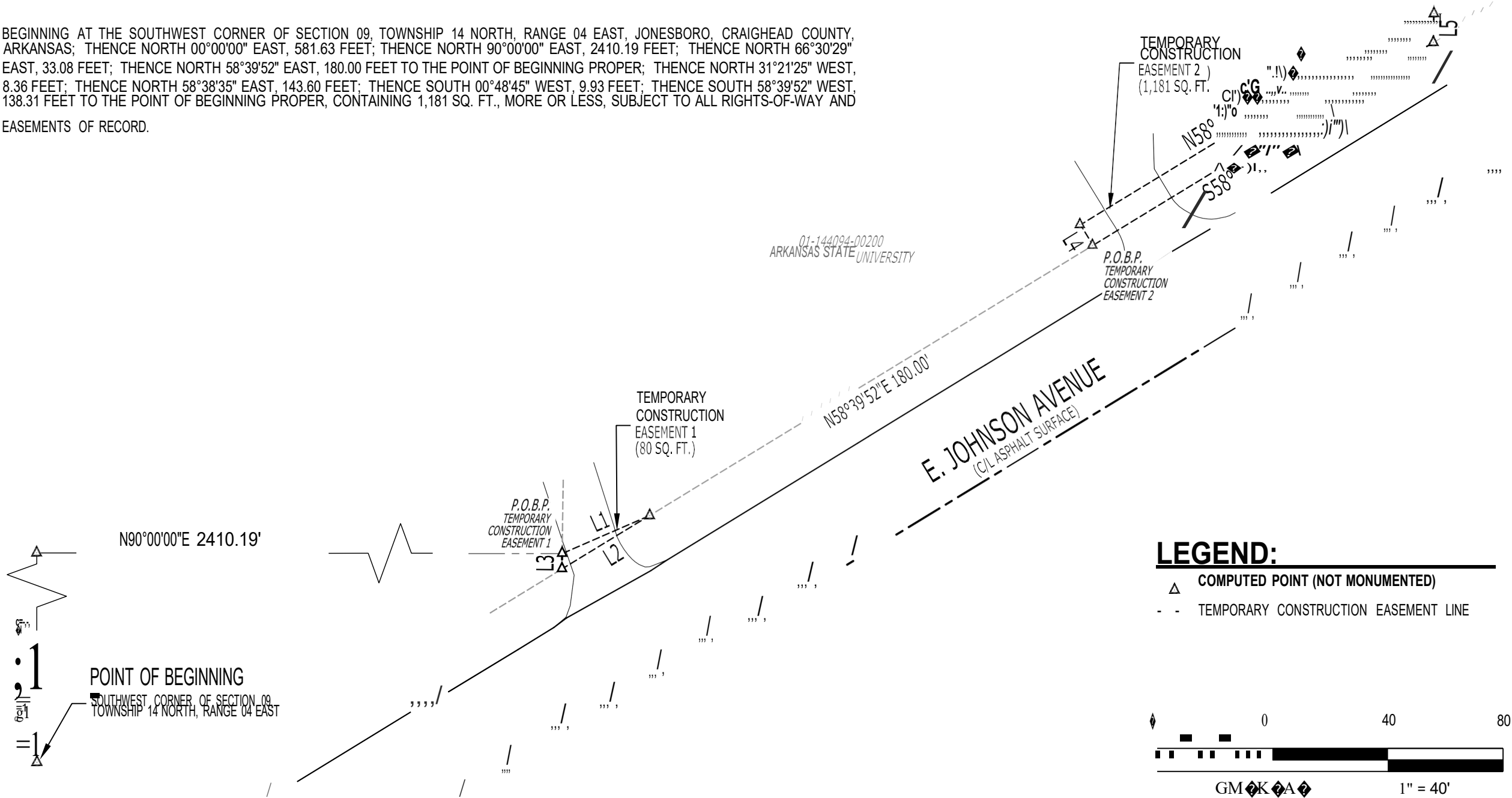
RIDGE SURVEYING & CONSULTING, PLLC.

404 Creath Avenue,  
Suite B  
Jonesboro, AR 72401

870-203-9940  
www.ridgesurveying.net



EASEMENT DEPICTION,  
NOT A BOUNDARY  
SURVEY



LEGEND:

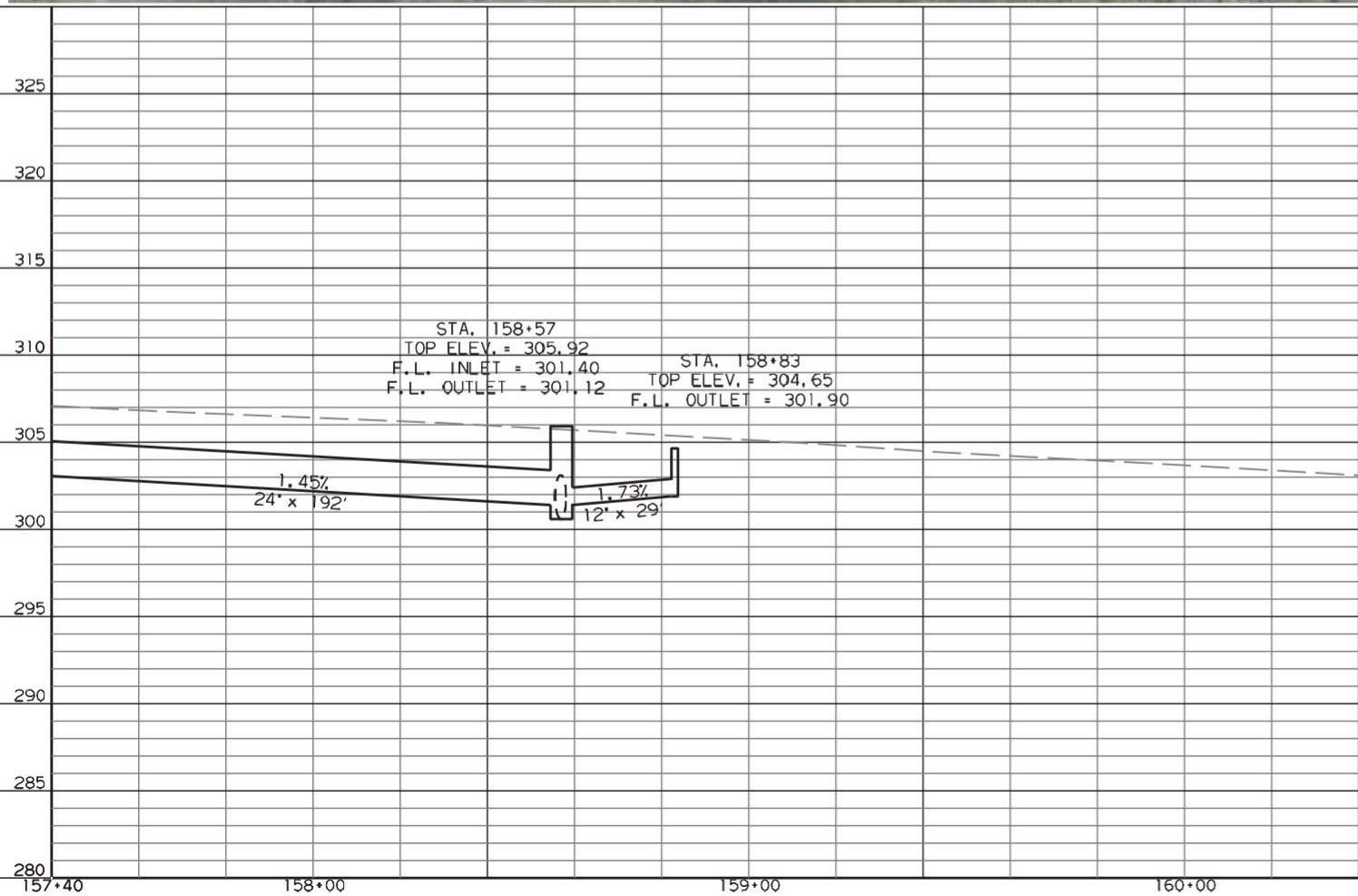
- △ COMPUTED POINT (NOT MONUMENTED)
- - TEMPORARY CONSTRUCTION EASEMENT LINE

DRAWING INFO

DRAWN BY: HRH	SCALE: 1" = 40'
DATE: 01/23/2025	JOB NO: 24226-08

REVISIONS



## EXHIBIT A

### UTILITY EASEMENT

KNOW ALL MEN BY THESE PRESENT:

That for and in consideration of the sum of One Dollar and Other Valuable Consideration (\$1.00 & OVC) to the undersigned, **ARKANSAS STATE UNIVERSITY - MOUNTAIN HOME** GRANTOR(S), does hereby grant, bargain, sell and convey unto **City of Mountain Home, AR.** GRANTEE(S), and unto its successor and assigns forever, the following utility easement to build, maintain and use, varying in width, with the right to construct or install, and thereafter use, operate, inspect, repair, maintain, replace and remove utility lines and necessary appurtenances thereto, along with right of ingress and egress, to and from the same, on, over, across and under the following described real estate situated in **Baxter** County, Arkansas, to wit:

#### UTILITY EASEMENT DESCRIPTION:

A UTILITY EASEMENT LOCATED IN PART OF THE NE1/4 OF SECTION 17, TOWNSHIP 19 NORTH, RANGE 13 WEST, BAXTER COUNTY ARKANSAS, MORE PARTICULARLY DESCRIBED AS FOLLOWS:

STARTING AT THE SOUTHWEST CORNER OF SAID NW¼ NW¼ OF SECTION 16; THENCE ALONG THE SOUTH LINE OF SAID NW¼ NW¼ N89°55'38"E, 27.76 FEET; THENCE N21°39'24"E, 33.17 FEET TO THE SOUTHEAST CORNER OF LOT 19 OF "SUNSET VIEW" SUBDIVISION AS SHOWN ON PLAT No 116 FILED IN THE RECORDER'S OF SAID COUNTY; THENCE ALONG THE SOUTH LINE OF THE SAID LOT 19 N86°23'35"W, 207.89 FEET TO THE SOUTHWEST CORNER OF SAID LOT 19 AND BEING A POINT ON THE SOUTH LINE OF "FULLER STREET" AS SHOWN ON SAID PLAT No 116 TO POINT OF BEGINNING OF THE EASEMENT BEING DESCRIBED; THENCE N86°47'27"W 20 FEET; THENCE S19°58'38"W 98 FEET; THENCE S86°47'27"E 20 FEET; THENCE N19°58'38"E 98 FEET TO POINT OF BEGINNING.

To have and to hold the same unto said Grantee(s) and to its successors and assigns forever or until said right-of-way is finally abandoned.

And Grantor(s) hereby covenant with the said Grantee(s) that they will forever warrant and defend the title to said lands and property against the lawful claims of any and all person whomever.

It is hereby understood and agreed that the party securing this grant in behalf of the Grantee(s) is without the authority to make any covenant or agreement not herein expressed.

**WITNESS** my/our hand(s) and seal(s) on this \_\_\_\_ day of \_\_\_\_\_, 20\_\_

\_\_\_\_\_  
Grantor

\_\_\_\_\_  
Grantor

**ACKNOWLEDGMENT**

STATE OF \_\_\_\_\_ )  
\_\_\_\_\_ )

55: COUNTY OF \_\_\_\_\_

**BE IT REMEMBERED** that on this day came before the undersigned, a Notary Public within and for the county and state aforementioned, duly commissioned and acting, \_\_\_\_\_, to me well known as the Grantor(s) in the foregoing Easement and stated that he/she/they had executed the same for the consideration and purposes therein mentioned and set forth.

**WITNESS** my hand and seal as such Notary Public this \_\_\_\_\_ day of \_\_\_\_\_, 20\_\_

**MY COMMISSION EXPIRES:**

\_\_\_\_\_  
NOTARY PUBLIC

A detailed plat map showing land parcels owned by Arkansas State University and Sunset View. The map includes U.S. Highway 62 at the top, Fuller St. running vertically, and Terrington St. running horizontally. Several parcels are labeled "SUNSET VIEW PLAT No. 116" with numbers 6, 7, and 19. A red-shaded area highlights a specific parcel boundary along Fuller St., with dimensions such as 180' x 72' 0", 180' x 72' 0", 277' 0", 180' x 72' 0", 180' x 72' 0", 277' 0", 180' x 72' 0", and 180' x 72' 0". A north arrow points towards the upper left.



**EXECUTIVE SUMMARY**

Contact: Pat Simms (501) 332-0245

**ACTION ITEM:** Arkansas State University Three Rivers (ASUTR) requests approval to offer eight new Certificates of Proficiency in 1) Automotive Drivability and Brakes, 2) Automotive Electrical and Chassis, 3) Construction Fundamentals, 4) Construction Residential Systems, 5) HVACR Fundamentals, 6) HVACR Residential Systems, 7) Welding Fundamentals, and 8) Welding Specialized Methods through the Malvern Career Center.

**ISSUE:** The Board of Trustees must approve the offering of any new degree.

**BACKGROUND:**

- The Malvern Career Center currently offers Certificates of Proficiency in Automotive Service Technology, Construction Technology, HVACR, and Welding. This proposal will create two Certificates of Proficiency in each of these programs. This will allow high school students to earn two credentials during their junior and senior years.
- Each proposed certificate is twelve credit hours.
- No new funding is required.

**RECOMMENDATION/RESOLUTION:**

Be it resolved that Arkansas State University Three Rivers is approved to offer Certificates of Proficiency in Automotive Drivability and Brakes, Automotive Electrical and Chassis, Construction Fundamentals, Construction Residential Systems, HVACR Fundamentals, HVACR Residential Systems, Welding Fundamentals, and Welding Specialized Methods through the Malvern Career Center, effective immediately.

---

Paul Rowton, Secretary

---

Steve Eddington, Chair

## EXHIBIT A

Feaster Trail:

JOB NO. 070528

TRACT NO. 01

### DONATION PERMANENT EASEMENT

KNOW ALL MEN BY THESE PRESENTS:

IN CONSIDERATION of the benefits that will inure Henderson State University, Grantor(s), and the public, the undersigned does hereby agree, without any remuneration or monetary consideration, to donate to **THE CITY OF ARKADELPHIA**, Arkansas, Grantee, and unto its successors and assigns, upon the terms and conditions hereinafter set forth, an exclusive and permanent right of way and easement for the construction and maintenance of Feaster Trail on Job No. **070528**, across, through and over the following lands situated in **Clark** County, State of Arkansas:

#### **PERMANENT EASEMENT**

AN EASEMENT BEING PART OF NORTH HALF OF SECTION 17, TOWNSHIP 7 SOUTH, RANGE 19 WEST, CLARK COUNTY, ARKANSAS, MORE PARTICULARLY DESCRIBED AS FOLLOWS:

COMMENCING AT NORTHWEST CORNER OF SECTION 8, TOWNSHIP 7 SOUTH, RANGE 19 WEST CALCULATED FROM AHTD JOB NUMBER 7507; THENCE ALONG THE NORTH LINE OF SAID SECTION S 89°42'14" E A DISTANCE OF 627.0 FEET TO THE CENTERLINE OF ARKANSAS STATE HIGHWAY 67 AS PER AHTD JOB NUMBER 7507 AT STATION 266+67; THENCE LEAVING SAID NORTH LINE S 04°34'46" W A DISTANCE OF 1,063.00 FEET ALONG THE CENTERLINE OF SAID HIGHWAY AS PER AHTD JOB NUMBER 7507, TO A POINT; THENCE CONTINUING ALONG SAID CENTERLINE, ALONG A CURVE TO THE LEFT HAVING A OF RADIUS 954.93 FEET AND A CHORD BEARING AND DISTANCE OF S 13°10'18" E, 582.28 FEET TO A POINT; THENCE ALONG SAID CENTERLINE S 30°55'14" E A DISTANCE OF 1,849.60 FEET TO A POINT; THENCE ALONG SAID CENTERLINE, ALONG A CURVE TO THE RIGHT HAVING A RADIUS OF 1432.39 FEET AND A CHORD BEARING AND DISTANCE OF S 24°08'28" E, 337.91 FEET TO A POINT; THENCE ALONG SAID CENTERLINE S 17°22'14" E A DISTANCE OF 2,751.02 FEET TO STATION 200+73 OF SAID CENTERLINE; THENCE LEAVING SAID CENTERLINE S 72°37'46" W A DISTANCE OF 100.00 FEET TO A POINT ON THE WEST RIGHT OF WAY OF ARKANSAS STATE HIGHWAY 67 AS PER AHTD JOB NUMBER 7507 BEING PERPENDICULAR TO SAID CENTERLINE, ALSO BEING THE POINT OF BEGINNING; THENCE ALONG SAID WEST RIGHT OF WAY S 17°49'04" E A DISTANCE OF 49.13 FEET TO A POINT; THENCE LEAVING SAID RIGHT OF WAY S 72°22'08" W A DISTANCE OF 179.10 FEET TO A POINT; THENCE S 73°01'34" W A DISTANCE OF 152.70 FEET TO A POINT; THENCE N 89°21'03" W A DISTANCE OF 65.13 FEET TO A POINT; THENCE N 81°24'02" W A DISTANCE OF 76.87' TO A POINT; THENCE S 77°26'03" W A DISTANCE OF 87.67 FEET TO A POINT; THENCE S 79°35'16" W A DISTANCE OF 56.18 FEET TO A POINT; THENCE S 72°45'20" W A DISTANCE OF 55.75 FEET TO A POINT; THENCE S 71°47'17" W A DISTANCE OF 65.69 FEET TO A POINT; THENCE S 57°28'37" W 32.57 FEET TO A POINT; THENCE S 40°37'13" W A DISTANCE OF 78.36 FEET TO A POINT; THENCE S 40°46'46" W A DISTANCE OF 63.90 FEET TO A POINT; THENCE S 52°26'46" W A DISTANCE OF 29.02 FEET TO A POINT; THENCE N 26°13'47" W A DISTANCE OF

25.73 FEET TO A POINT; THENCE N 42°55'31" E A DISTANCE OF 84.78 FEET TO A POINT; THENCE N 36°51'34" E A DISTANCE OF 27.08 FEET TO A POINT; THENCE N 43° 36'15" E A DISTANCE OF 37.22 FEET TO A POINT; THENCE N 49°59'18" E A DISTANCE OF 25.94 FEET TO A POINT; THENCE N 57°46'17" E A DISTANCE OF 27.63 FEET TO A POINT; THENCE N 68°01'37" E A DISTANCE OF 66.57 FEET TO A POINT; N 75°39'11" E A DISTANCE OF 114.63 FEET TO A POINT; THENCE N 76°17'22" E A DISTANCE OF 15.27 FEET TO A POINT ON THE APPARENT SOUTH RIGHT OF WAY OF M.H. RUSSELL DRIVE; THENCE ALONG SAID SOUTH RIGHT OF WAY N 85°35'38" E A DISTANCE OF 105.59 FEET TO A POINT; THENCE N 84°53'03" E A DISTANCE OF 36.11 FEET TO A POINT; THENCE N 83°39'46" E A DISTANCE OF 41.13 FEET TO A POINT; THENCE ALONG A CURVE TO THE LEFT HAVING A RADIUS OF 961.60 FEET AND A CHORD BEARING AND DISTANCE OF N 74°37'45" E, 291.99 FEET TO A POINT; THENCE N 65°25'53" E A DISTANCE OF 39.77 TO A POINT; THENCE N 65°22'57" E A DISTANCE OF 25.89 FEET TO THE POINT OF BEGINNING, CONTAINING 0.69 ACRES MORE OR LESS.

Together with the rights, easements and privileges in or to said lands which may be required for the full enjoyment of the right herein granted, said purposes being the construction and maintenance of Feaster Trail by the **CITY OF ARKADELPHIA, AR**, in connection with Job No. **070528**, the maintenance of same to be the responsibility of **THE CITY OF ARKADELPHIA, AR/COUNTY OF CLARK**.

IN ACCORDANCE with Public Law 91-646, Uniform Relocation Assistance and Real Property Acquisition Policies Act, the Grantor has the right to receive just compensation for the subject property. Also, the Grantor is entitled to an appraisal of the subject property. Execution of this Permanent Easement will release the County from the obligation of providing just compensation and an appraisal.

TO HAVE AND TO HOLD the same unto the said **CITY OF ARKADELPHIA, AR**, and to its successors and assigns forever.

AND hereby covenant with the said **CITY OF ARKADELPHIA, AR**, that will forever warrant and defend the title to said lands and property against the lawful claims of any and all persons whomsoever.

WITNESS my signature on this \_\_\_\_\_ day of \_\_\_\_\_, 2025.

\_\_\_\_\_  
(SIGNATURE)

\_\_\_\_\_  
(SIGNATURE)

#### A C K N O W L E D G M E N T

STATE OF ARKANSAS

COUNTY OF \_\_\_\_\_

BE IT REMEMBERED, that on this day before the undersigned, a Notary Public, within and for the County and State aforesaid, duly commissioned and acting, appeared in person \_\_\_\_\_, to me well known as the Grantor(s) in the foregoing instrument, and stated that he/she/they had executed the same for the consideration and purposes therein mentioned and set forth.

WITNESS my hand and seal as such Notary Public this \_\_\_\_\_ day of \_\_\_\_\_, 2025.

\_\_\_\_\_  
MY COMMISSION EXPIRES:

\_\_\_\_\_  
NOTARY PUBLIC

FILE NAME: A:\43000s\43254\016\SURV\CADD\Sheets\EX\_01\_43254.016.dwg DATE: April 2, 2025 TIME: 4:07 PM USER: #3974

EXHIBIT "B"

POC  
NW COR  
S8-T7S-R19W  
CALCULATED FROM AHTD  
JOB NO. 7507

STA: 266+67  
CL HWY 67  
BASED ON AHTD JOB NO. 7507

EASEMENT DESCRIPTION

AN EASEMENT BEING PART OF NORTH HALF OF SECTION 17, TOWNSHIP 7 SOUTH, RANGE 19 WEST, CLARK COUNTY, ARKANSAS, MORE PARTICULARLY DESCRIBED AS FOLLOWS:

COMMENCING AT NORTHWEST CORNER OF SECTION 8, TOWNSHIP 7 SOUTH, RANGE 19 WEST CALCULATED FROM AHTD JOB NUMBER 7507, THENCE ALONG THE NORTH LINE OF SAID SECTION S 89°42'14" E A DISTANCE OF 627.0 FEET TO THE CENTERLINE OF ARKANSAS STATE HIGHWAY 67 AS PER AHTD JOB NUMBER 7507 AT STATION 266+67; THENCE LEAVING SAID NORTH LINE S 04°34'46" W A DISTANCE OF 1,063.00 FEET ALONG THE CENTERLINE OF SAID HIGHWAY AS PER AHTD JOB NUMBER 7507, TO A POINT; THENCE CONTINUING ALONG SAID CENTERLINE, ALONG A CURVE TO THE LEFT HAVING A RADIUS OF 954.93 FEET AND A CHORD BEARING AND DISTANCE OF S 13°10'18" E, 582.28 FEET TO A POINT; THENCE ALONG SAID CENTERLINE S 30°55'14" E A DISTANCE OF 1,849.60 FEET TO A POINT; THENCE ALONG SAID CENTERLINE, ALONG A CURVE TO THE RIGHT HAVING A RADIUS OF 1432.39 FEET AND A CHORD BEARING AND DISTANCE OF S 24°08'28" E, 337.91 FEET TO A POINT; THENCE ALONG SAID CENTERLINE S 17°22'14" E A DISTANCE OF 2,751.02 FEET TO STATION 200+73 OF SAID CENTERLINE; THENCE LEAVING SAID CENTERLINE S 72°37'46" W A DISTANCE OF 100.00 FEET TO A POINT ON THE WEST RIGHT OF WAY OF ARKANSAS STATE HIGHWAY 67 AS PER AHTD JOB NUMBER 7507 BEING PERPENDICULAR TO SAID CENTERLINE, ALSO BEING THE POINT OF BEGINNING, THENCE ALONG SAID WEST RIGHT OF WAY S 17°49'04" E A DISTANCE OF 49.13 FEET TO A POINT; THENCE LEAVING SAID RIGHT OF WAY S 72°22'08" W A DISTANCE OF 179.10 FEET TO A POINT; THENCE S 73°01'34" W A DISTANCE OF 152.70 FEET TO A POINT; THENCE N 89°21'03" W A DISTANCE OF 65.13 FEET TO A POINT; THENCE N 81°24'02" W A DISTANCE OF 76.87 FEET TO A POINT; THENCE S 77°26'03" W A DISTANCE OF 87.67 FEET TO A POINT; THENCE S 79°35'16" W A DISTANCE OF 56.18 FEET TO A POINT; THENCE S 72°45'20" W A DISTANCE OF 55.75 FEET TO A POINT; THENCE S 71°47'17" W A DISTANCE OF 65.89 FEET TO A POINT; THENCE S 57°28'37" W 32.57 FEET TO A POINT; THENCE S 40°37'13" W A DISTANCE OF 78.36 FEET TO A POINT; THENCE S 40°46'46" W A DISTANCE OF 63.90 FEET TO A POINT; THENCE S 52°26'46" W A DISTANCE OF 29.02 FEET TO A POINT; THENCE N 26°13'47" W A DISTANCE OF 25.73 FEET TO A POINT; THENCE N 42°55'31" E A DISTANCE OF 84.78 FEET TO A POINT; THENCE N 36°51'34" E A DISTANCE OF 27.08 FEET TO A POINT; THENCE N 43°36'15" E A DISTANCE OF 37.22 FEET TO A POINT; THENCE N 49°59'18" E A DISTANCE OF 25.94 FEET TO A POINT; THENCE N 68°01'37" E A DISTANCE OF 66.57 FEET TO A POINT; THENCE N 57°46'17" E A DISTANCE OF 27.63 FEET TO A POINT; THENCE N 89°01'37" E A DISTANCE OF 66.57 FEET TO A POINT; THENCE N 75°39'11" E A DISTANCE OF 114.63 FEET TO A POINT; THENCE N 76°17'22" E A DISTANCE OF 15.27 FEET TO A POINT ON THE APPARENT SOUTH RIGHT OF WAY OF M.H. RUSSELL DRIVE; THENCE ALONG SAID SOUTH RIGHT OF WAY N 85°35'38" E A DISTANCE OF 105.59 FEET TO A POINT; THENCE N 84°53'03" E A DISTANCE OF 36.11 FEET TO A POINT; THENCE N 83°39'46" E A DISTANCE OF 41.13 FEET TO A POINT; THENCE ALONG A CURVE TO THE LEFT HAVING A RADIUS OF 961.60 FEET AND A CHORD BEARING AND DISTANCE OF N 74°37'45" E, 291.99 FEET TO A POINT; THENCE N 65°25'53" E A DISTANCE OF 39.77 FEET TO A POINT; THENCE N 65°22'57" E A DISTANCE OF 25.89 FEET TO THE POINT OF BEGINNING, CONTAINING 0.69 ACRES MORE OR LESS.

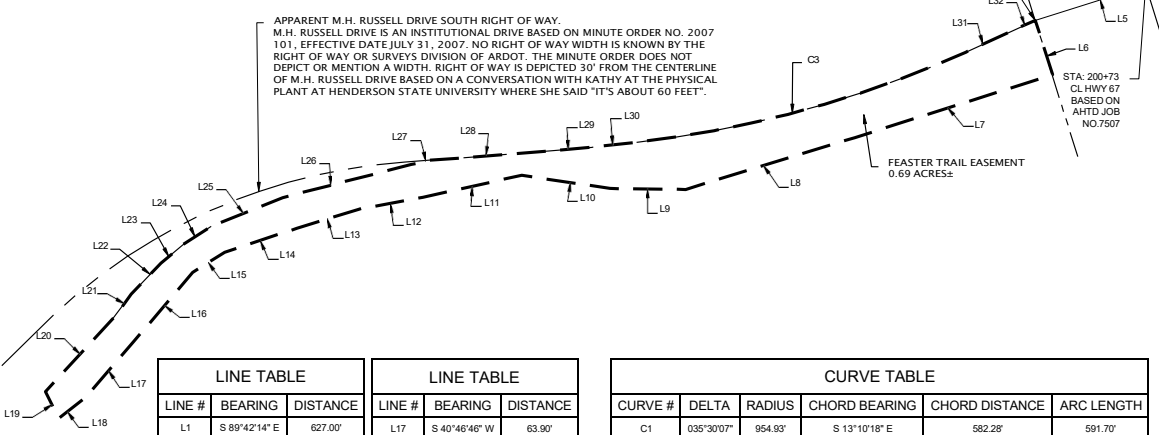
APPARENT M.H. RUSSELL DRIVE SOUTH RIGHT OF WAY.  
M.H. RUSSELL DRIVE IS AN INSTITUTIONAL DRIVE BASED ON MINUTE ORDER NO. 2007 101, EFFECTIVE DATE JULY 31, 2007. NO RIGHT OF WAY WIDTH IS KNOWN BY THE RIGHT OF WAY OR SURVEYS DIVISION OF ARDOT. THE MINUTE ORDER DOES NOT DEPICT OR MENTION A WIDTH. RIGHT OF WAY IS DEPICTED 30' FROM THE CENTERLINE OF M.H. RUSSELL DRIVE BASED ON A CONVERSATION WITH KATHY AT THE PHYSICAL PLANT AT HENDERSON STATE UNIVERSITY WHERE SHE SAID "IT'S ABOUT 60 FEET".

R/W BASED ON AHTD JOB 7507

POB  
WEST R/W HWY 67  
STA 200+73 (100' LT)  
AHTD JOB NO. 7507

STA: 200+73  
CL HWY 67  
BASED ON  
AHTD JOB  
NO. 7507

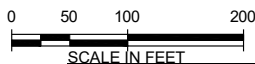
FEASTER TRAIL EASEMENT  
0.69 ACRES



LINE TABLE		
LINE #	BEARING	DISTANCE
L1	S 89°42'14" E	627.00'
L2	S 04°34'46" W	1,063.00'
L3	S 30°55'14" E	1,849.60'
L4	S 17°22'14" E	2,751.02'
L5	S 72°37'46" W	100.00'
L6	S 17°49'04" E	49.13'
L7	S 72°22'08" W	179.10'
L8	S 73°01'34" W	152.70'
L9	N 89°21'03" W	65.13'
L10	N 81°24'02" W	76.87'
L11	S 77°26'03" W	87.67'
L12	S 79°35'16" W	56.18'
L13	S 72°45'20" W	55.75'
L14	S 71°47'17" W	65.89'
L15	S 57°28'37" W	32.57'
L16	S 40°37'13" W	78.36'

LINE TABLE		
LINE #	BEARING	DISTANCE
L17	S 40°46'46" W	63.90'
L18	S 52°26'46" W	29.02'
L19	N 26°13'47" W	25.73'
L20	N 42°55'31" E	84.78'
L21	N 36°51'34" E	27.08'
L22	N 43°36'15" E	37.22'
L23	N 49°59'18" E	25.94'
L24	N 57°46'17" E	27.63'
L25	N 68°01'37" E	66.57'
L26	N 75°39'11" E	114.63'
L27	N 76°17'22" E	15.27'
L28	N 85°35'38" E	105.59'
L29	N 84°53'03" E	36.11'
L30	N 83°39'46" E	41.13'
L31	N 65°25'53" E	39.77'
L32	N 65°22'57" E	25.89'

CURVE TABLE				
CURVE #	DELTA	RADIUS	CHORD BEARING	CHORD DISTANCE
C1	035°30'07"	954.93'	S 13°10'18" E	582.28'
C2	013°32'53"	1432.39'	S 24°08'28" E	337.91'
C3	017°27'55"	961.60'	N 74°37'45" E	291.99'



NOTES:

1. BASIS OF BEARINGS DERIVED FROM THE ARKANSAS STATE COORDINATE SYSTEM, NAD83 (2011), SOUTH ZONE.



5318 JOHN F. KENNEDY BLVD.  
NORTH LITTLE ROCK, AR 72116  
TEL. (501) 753-1987

CITY OF ARKADELPHIA  
FEASTER TRAIL

SITUATED IN  
SECTION 17  
TOWNSHIP 7 SOUTH  
RANGE 19 WEST

PROJECT NO.: 43254.016

ISSUED: 4/2/2025

DRAWN BY: AJF

CHECKED BY: KLM

SCALE: 1" = 100'

SHEET TITLE

EASEMENT  
EXHIBIT

PAGE NUMBER 1 OF 1

ASU System New Hires: Period May16th - August 15th

Descending Sort by Salary



Campus: Arkansas State University System Office

Non-Academic Assignments

<u>First Name</u>	<u>Last Name</u>	<u>TITLE</u>	<u>Annual Salary</u>	<u>Current Hire Date</u>	<u>POSITION</u>	<u>Cost Center</u>
None to Report						

Campus: A-State

Non-Academic Assignments

<u>First Name</u>	<u>Last Name</u>	<u>TITLE</u>	<u>Annual Salary</u>	<u>Current Hire Date</u>	<u>POSITION</u>	<u>Cost Center</u>
Philip	Johnson	Associate Dean of Schools	\$190,000.00	8/4/2025	A01296	264100 Dean of Veterinary School
Amanda	Nickerson	Vice Chancellor	\$155,250.00	7/1/2025	A00011	180001 Vice Chancellor for Enrollment Management and Global Outreach
Christopher	Brown	Project Program Specialist	\$80,000.00	7/1/2025	A00071	210001 Provost/Academic Affairs and Research
Jennifer	Salo	Student Development Specialist	\$60,000.00	6/23/2025	A00513	260101 Undergraduate Studies
Jackson	Chrestman	Systems Analyst	\$51,000.00	7/1/2025	A00554	160511 informatin and Technology Services
Cameron	Lumpkin	Information Technology Manager	\$51,000.00	7/1/2025	A00589	160511 informatin and Technology Services
Talitha	Bryant	Academic Adviser	\$47,000.00	6/2/2025	A01228	151080 Academic Support Center for Athletes
Samantha	Dunavion	Academic Advisor	\$47,000.00	7/28/2025	A00527	258201 A-State Online Nursing
Amanda	Prestidge	Fiscal Support Manager	\$45,000.00	5/5/2025	A01311	311041 Treasurer
Maggie	Turner	Project Program Manager	\$45,000.00	7/1/2025	A00440	510001 Vice Chancellor for University Advancement
Dean	Cooper	Asst Coach	\$40,000.00	5/22/2025	A00220	152201 Men's Basketball
Indoneshia	Haynes	Academic Advisor	\$40,000.00	8/4/2025	A00752	260501 Transition Studies
Mallory	Kibler	Academic Counselor	\$40,000.00	7/28/2025	A02639	260101 Undergraduate Studies
Stephen	Conn	Asst Coach	\$40,000.00	7/1/2025	A00749	153101 Women's Bowling
Philip	Woods	Asst Coach	\$35,876.00	7/1/2025	A00824	153601 Women's Track
Michael	Agis	Special Events Manager	\$35,600.00	8/1/2025	A01087	152401 Baseball
Marshall	Mordecai	Asst Coach	\$35,000.00	7/1/2025	A02646	153401 Women's Tennis
Isabella	Bogdan	Project Program Specialist	\$33,568.00	6/9/2025	A00400	152101 Football

Academic Assignments

<u>First Name</u>	<u>Last Name</u>	<u>TITLE</u>	<u>Annual Salary</u>	<u>Current Hire Date</u>	<u>POSITION</u>	<u>Cost Center</u>
Kevin	Brueilly	Department Chairperson	\$150,000.00	8/1/2025	F00003	258601 Physical Therapy
Scott	Reiners	Veterinary Medicine Instructor	\$150,000.00	8/1/2025	F00067	264100 Dean of Veterinary School
Claire	Kelly	Veterinary Medicine Instructor	\$130,000.00	6/16/2025	F00707	264100 Dean of Veterinary School
Deborah	Popham	Department Chairperson	\$104,000.00	7/1/2025	F00013	250451 Music
Caetlyn	Elder	Archivist	\$47,500.00	7/1/2025	A00382	263201 Library Operations

Campus: Beebe

Non-Academic Assignments

<u>First Name</u>	<u>Last Name</u>	<u>TITLE</u>	<u>Annual Salary</u>	<u>Current Hire Date</u>	<u>POSITION</u>	<u>Cost Center</u>
April	Gray	VC for Finance & Administration/CFO	\$120,000.00	7/1/2025	A00003	601000 Finance and Administration
Matthew	Jenkins	Marketing Coordinator	\$55,000.00	6/16/2025	A00187	104000 Marketing and Public Relations

<u>First Name</u>	<u>Last Name</u>	<u>TITLE</u>	<u>Annual Salary</u>	<u>Current Hire Date</u>	<u>POSITION</u>	<u>Cost Center</u>
Bailey	Crane	Instructor of Agriculture	\$51,233.00	7/16/2025	F12004	291200 Agriculture
Caroline	Lester	Instructor of Agriculture	\$51,233.00	7/1/2025	F12003	291200 Agriculture

**Campus: Mountain Home**  
**Non-Academic Assignments**

<u>First Name</u>	<u>Last Name</u>	<u>TITLE</u>	<u>Annual Salary</u>	<u>Current Hire Date</u>	<u>POSITION</u>	<u>Cost Center</u>
Sandra	Massey	VC for Academic Affairs	\$100,000.00	7/16/2025	A00002	300000 Office of Academic Affairs/Provost
Landon	Hay	Athletic Recruiter/Baseball Coach/Athletic Director	\$45,000.00	6/1/2025	A00058	490100 Athletics-Baseball

**Academic Assignments**

<u>First Name</u>	<u>Last Name</u>	<u>TITLE</u>	<u>Annual Salary</u>	<u>Current Hire Date</u>	<u>POSITION</u>	<u>Cost Center</u>
None To Report						

**Campus: Newport**  
**Non-Academic Assignments**

<u>First Name</u>	<u>Last Name</u>	<u>TITLE</u>	<u>Annual Salary</u>	<u>Current Hire Date</u>	<u>POSITION</u>	<u>Cost Center</u>
Grace	Acred	Payroll Services Specialist	\$50,000.00	6/16/2025	NC0022	350001 Ex Director Administrative Services

**Academic Assignments**

<u>First Name</u>	<u>Last Name</u>	<u>TITLE</u>	<u>Annual Salary</u>	<u>Current Hire Date</u>	<u>POSITION</u>	<u>Cost Center</u>
Sinaly	Karamoko	Instructor of Data Science	\$75,000.00	7/16/2025	F00011	201105 Data Science NP

Campus: MidSouth

Non-Academic Assignments

<u>First Name</u>	<u>Last Name</u>	<u>TITLE</u>	<u>Annual Salary</u>	<u>Current Hire Date</u>	<u>POSITION</u>	<u>Cost Center</u>
Jerry	Floate	Dir Of Adult Education	\$67,756.00	7/7/2025	NC3300	200500 Adult Education

Academic Assignments

<u>First Name</u>	<u>Last Name</u>	<u>TITLE</u>	<u>Annual Salary</u>	<u>Current Hire Date</u>	<u>POSITION</u>	<u>Cost Center</u>
Nicholas	Clark	Faculty 12-Month	\$55,000.00	6/2/2025	F12007	220100 Aviation Maintenance Technology
Steven	Gaboriault	Faculty 12-Month	\$55,000.00	6/9/2025	F12009	220200 Automotive & Diesel Technology
Ming	Cheng	Faculty 10-Month	\$40,000.00	8/4/2025	F10113	210200 Communicationa and Humanities

Campus: Three Rivers

Non-Academic Assignments

<u>First Name</u>	<u>Last Name</u>	<u>TITLE</u>	<u>Annual Salary</u>	<u>Current Hire Date</u>	<u>POSITION</u>	<u>Cost Center</u>
Jeffrey	Hughes	Head Baseball Coach	\$47,000.00	7/21/2025	AT0001	152100 Baseball

Academic Assignments

<u>First Name</u>	<u>Last Name</u>	<u>TITLE</u>	<u>Annual Salary</u>	<u>Current Hire Date</u>	<u>POSITION</u>	<u>Cost Center</u>
Amber	Evans	Faculty - 10 Month	\$41,686.00	8/11/2025	F90027	255006 SCTC Health Body Systems

Campus: Henderson

Non-Academic Assignments

<u>First Name</u>	<u>Last Name</u>	<u>TITLE</u>	<u>Annual Salary</u>	<u>Current Hire Date</u>	<u>POSITION</u>	<u>Cost Center</u>
Yuliya	Riddle	Director Of Counseling	\$94,000.00	7/14/2025	A00023	400050 Student Health and Counseling Center
Brett	Charlton	Coach	\$60,000.00	7/14/2025	U00048	615000 Men's Track
Myles	Jerrels	Asst. Athletic Trainer	\$55,000.00	7/1/2025	U00043	600011 Athletic Training
Darius	Carey	Assistant Coach	\$45,000.00	#####	U00030	610000 Football

Academic Assignments

<u>First Name</u>	<u>Last Name</u>	<u>TITLE</u>	<u>Annual Salary</u>	<u>Current Hire Date</u>	<u>POSITION</u>	<u>Cost Center</u>
Ashly	Siskowski	Assistant Professor - 12 Month	\$83,333.00	7/1/2025	T00032	250100 Nursing



ASU System New Hires: Period August 16th - November 15th

Descending Sort by Salary



Campus: Arkansas State University System Office  
Non-Academic Assignments

<u>First Name</u>	<u>Last Name</u>	<u>TITLE</u>	<u>Annual Salary</u>	<u>Current Hire Date</u>	<u>POSITION</u>	<u>Cost Center</u>	<u>Comments</u>
None To Report							

Campus: A-State  
Non-Academic Assignments

<u>First Name</u>	<u>Last Name</u>	<u>TITLE</u>	<u>Annual Salary</u>	<u>Current Hire Date</u>	<u>POSITION</u>	<u>Cost Center</u>
Clifford	Harrell	Assoc Dir of Athletics	\$175,000.00	10/27/2025	A00498	151001 Athletic Admnistration
Nicholas	Carroll	Asst Dir Athletics	\$80,000.00	9/1/2025	A00214	151002 Compliance
Nigar	Najafova	Ticket Mgr Convocation Center	\$70,000.00	10/6/2025	A00235	313511 First National Bank Arena
Junyi	Lu	Project Program Specialist	\$45,000.00	10/13/2025	A00074	210201 Institutional Research
Ana-Liese	Torres	Student Development Specialist	\$45,000.00	8/18/2025	A02643	160011 Access and Accommodation Services
Emily	Morgan	Research Assistant	\$40,000.00	10/13/2025	A00177	210112 A-State Online Operations
Tyler	Wagganer	Academic Advisor	\$40,000.00	8/18/2025	A00153	260501 First Year Studies
Hannah	Williamson	Academic Advisor	\$40,000.00	8/25/2025	A00155	260101 University College
Wendy	Onek	Museum Exhibit Program Specialist	\$35,568.00	10/1/2025	A00943	212820 Johnny Cash Heritae Site

Academic Assignments

<u>First Name</u>	<u>Last Name</u>	<u>TITLE</u>	<u>Annual Salary</u>	<u>Current Hire Date</u>	<u>POSITION</u>	<u>Cost Center</u>
Trey	Neyland	Veterinary Medicine Instructor	\$130,000.00	8/25/2025	F00708	264100 Dean of Veterinary School
Shane	Hagen	Assistant Professor--12 Mo	\$88,000.00	10/16/2025	F00488	258201 Nursing
Mohammadreza	Daroonparvar	Assistant Professor 9 mo	\$85,000.00	8/16/2025	F00641	255901 Engineering Instruction
Chantell	Corkern	Assistant Professor--12 Mo	\$83,000.00	10/27/2025	F00599	258201 Nursing
Anthony	Allen	Assistant Professor--12 Mo	\$80,000.00	8/16/2025	F00043	258601 Physical Therapy
Jesse	Radolinski	Assistant Professor	\$77,500.00	8/16/2025	F00413	251205 Agricultural Studies
Sarah	Rose	Assistant Professor	\$72,500.00	8/16/2025	F00121	259201 Biological Sciences
Min	Hua	Associate Professor	\$67,000.00	8/16/2025	F00294	259501 Mathematics Statistics
Katlynnne	Gillespie	Assistant Professor	\$65,000.00	8/16/2025	F00084	258501 Communication Disorders
Asif	Hoda	Assistant Professor	\$65,000.00	8/16/2025	F00348	255901 Engineering Instruction
Edmund	Adu	Instructor	\$62,500.00	8/16/2025	F00078	250801 Political Science
Ronjonette	Obannon	Instructor	\$62,000.00	8/16/2025	F00210	258301 Social Work
Yun Ju	Huang	Associate Professor	\$60,000.00	8/16/2025	F00214	254501 Psychology and Counseling
Marshall	Mainer	Assistant Professor	\$60,000.00	8/16/2025	F00297	254401 Health Physical Educ Sports Science
Wesley	Jackson	Assistant Professor	\$60,000.00	8/16/2025	F00161	250701 History
Benqiao	Jiang	Assistant Professor	\$60,000.00	8/16/2025	F00589	254401 Health Physical Educ Sports Science
Robert	Love	Assistant Professor	\$60,000.00	10/1/2025	F00505	258101 Dean of Nursing and Health Professions
Emily	Raibley	Assistant Professor	\$60,000.00	8/16/2025	F00087	254501 Psychology and Counseling
Deborah	Wammack	Instructor	\$54,000.00	9/1/2025	F00565	254801 School of Teacher Education
Christopher	Saldivar	Instructor	\$50,000.00	8/16/2025	F00587	255601 Computer Sciences
Nasrin	Sultana Nipa	Instructor	\$50,000.00	8/16/2025	F00195	255601 Computer Sciences
Kristan	Angel	Instructor	\$48,000.00	8/16/2025	F00251	254803 Teacher Education - Other Campuses
Nilka	Quintanar	Instructor	\$40,000.00	8/16/2025	F00498	250751 Department of World Languages-Cultures
Ariel	Sutton	Project Program Manager - 10 Month	\$28,000.00	9/22/2025	P00053	254751 Childhood Services

Campus: Beebe  
Non-Academic Assignments

<u>First Name</u>	<u>Last Name</u>	<u>TITLE</u>	<u>Annual Salary</u>	<u>Current Hire Date</u>	<u>POSITION</u>	<u>Cost Center</u>
-------------------	------------------	--------------	----------------------	--------------------------	-----------------	--------------------

Maguire	Rodgers	Director Of Enterprise Application Systems	\$55,000.00	10/16/2025	A00025	703000 Information Technology Services	
Academic Assignments							
<u>First Name</u>	<u>Last Name</u>	<u>TITLE</u>	<u>Annual Salary</u>	<u>Current Hire Date</u>	<u>POSITION</u>	<u>Cost Center</u>	
Kevin	Newsom	Instructor (12) - Nursing	\$54,871.00	10/1/2025	F12025	292000 Nursing	
Morgan	Steele	Instructor (12) - Nursing	\$51,233.00	10/1/2025	F12020	292000 Nursing	
Carey	Byars	Instructor of Communications	\$42,500.00	8/18/2025	F09020	291500 Business Administration	
Amanda	Davis	Instructor of Mathematics	\$38,425.00	8/18/2025	F09028	273000 Math	
Campus: Mountain Home							
Non-Academic Assignments							
<u>First Name</u>	<u>Last Name</u>	<u>TITLE</u>	<u>Annual Salary</u>	<u>Current Hire Date</u>	<u>POSITION</u>	<u>Cost Center</u>	
Kelly	Huff	Marketing & Digital Media Coordinator	\$48,000.00	9/16/2025	A00013	540000 Marketing & Community Relations	
Kasey	Bass	Community and Advancement Operations Coordinator	\$45,000.00	11/1/2025	A00018	550000 Development	
Sarah	Golden	Community & Advancement Ops Coord	\$45,000.00	8/25/2025	A00018	550000 Development	Separated 10/21/25
Jacob	Clary	Head Softball Coach / Associate Athletic Director / Recruiter	\$36,000.00	10/16/2025	A00024	490200 Auxiliary - Softball	
Academic Assignments							
<u>First Name</u>	<u>Last Name</u>	<u>TITLE</u>	<u>Annual Salary</u>	<u>Current Hire Date</u>	<u>POSITION</u>	<u>Cost Center</u>	
Victoria	Hampton	Faculty	\$45,000.00	8/18/2025	F00020	331500 Health Sciences	
Campus: Newport							
Non-Academic Assignments							
<u>First Name</u>	<u>Last Name</u>	<u>TITLE</u>	<u>Annual Salary</u>	<u>Current Hire Date</u>	<u>POSITION</u>	<u>Cost Center</u>	
Mikelle	Moore	Student Recruiter	\$45,000.00	8/16/2025	NC0017	301201 Director Enrollment Management	Separated 9/12/2025
Academic Assignments							
<u>First Name</u>	<u>Last Name</u>	<u>TITLE</u>	<u>Annual Salary</u>	<u>Current Hire Date</u>	<u>POSITION</u>	<u>Cost Center</u>	
Turell	Pendergrass	Special Instructor	\$62,000.00	9/16/2025	F00031	232007 Adv Manufacturing Technology JB	
Jackie	Thompson	Instructor of Industrial Controls	\$62,000.00	9/1/2025	F00030	280001 Director of Workforce Development	
Campus: MidSouth							
Non-Academic Assignments							
<u>First Name</u>	<u>Last Name</u>	<u>TITLE</u>	<u>Annual Salary</u>	<u>Current Hire Date</u>	<u>POSITION</u>	<u>Cost Center</u>	
Margaret	Ashley	Communications & Design Specialist	\$48,000.00	8/25/2025	NC2550	310000 Marketing	
Academic Assignments							
<u>First Name</u>	<u>Last Name</u>	<u>TITLE</u>	<u>Annual Salary</u>	<u>Current Hire Date</u>	<u>POSITION</u>	<u>Cost Center</u>	
Timothy	Dunlap	Faculty - 12 Month	\$55,000.00	8/13/2025	F12002	240500 Information Systems Technology	
Campus: Three Rivers							
Non-Academic Assignments							
<u>First Name</u>	<u>Last Name</u>	<u>TITLE</u>	<u>Annual Salary</u>	<u>Current Hire Date</u>	<u>POSITION</u>	<u>Cost Center</u>	
Mason	Robinson	Vice Chancellor of Saline County Career and Technical Center	\$95,000.00	8/18/2025	AC0015	255001 SCCTC Administration	
Nathan	Gregson	SalineSync Workforce Faculty	\$50,533.00	10/7/2025	AC0023	260002 Workforce SCCTC Admin	
Nytalya	Salter	Human Resources Generalist	\$50,000.00	8/25/2025	NC0005	340001 Human Resources	
Academic Assignments							
<u>First Name</u>	<u>Last Name</u>	<u>TITLE</u>	<u>Annual Salary</u>	<u>Current Hire Date</u>	<u>POSITION</u>	<u>Cost Center</u>	
None To Report							

Campus: Henderson  
Non-Academic Assignments

<u>First Name</u>	<u>Last Name</u>	<u>TITLE</u>	<u>Annual Salary</u>	<u>Current Hire Date</u>	<u>POSITION</u>	<u>Cost Center</u>
Jewelie	Mills	Financial Aid Analyst	\$42,504.00	9/8/2025	A00244	400250 Office of Financial Aid and Scholarships
Wesley	Vose	Project Program Specialist	\$35,600.00	9/1/2025	U00014	400150 Housing and Community Standards
Alexis	Dixon	Project Program Specialist	\$35,568.00	9/16/2025	A00054	264300 Enrollment Services and Admissions
Natalie	Jones	Institutional Assistant	\$35,568.00	11/3/2025	A00093	264200 Academic Advising Cener
Angela	Shields	Institutional Assistant	\$35,568.00	9/8/2025	A00092	264200 Academic Advising Center
Maddox	Tidwell	Asst Coach	\$29,469.00	8/16/2025	U00036	622000 Women's Swimming

Academic Assignments

<u>First Name</u>	<u>Last Name</u>	<u>TITLE</u>	<u>Annual Salary</u>	<u>Current Hire Date</u>	<u>POSITION</u>	<u>Cost Center</u>
Lela	Pumphrey	Professor	\$115,000.00	8/16/2025	F00168	230000 School of Business
Yagnya Murti	Pokhrel	Assistant Professor	\$70,000.00	8/16/2025	F00146	250200 Engineering and Physics
Sarah	Overbey	Assistant Professor	\$60,000.00	8/16/2025	F00136	250100 Nursing
Evan	Jackson	Instructor 9 Month	\$58,000.00	8/16/2025	F00091	250050 Aviation
Vincent	Sears	Assistant Professor 9 Mo	\$53,000.00	8/16/2025	F00069	220350 Counselor Education
Tharika	Liyanapathirannehelage	Faculty - Assistant	\$52,000.00	8/16/2025	F00096	250000 Aviation, Science, and Nursing
Pamela	Lewis	Instructor	\$48,000.00	8/16/2025	F00065	220100 Curriculum and Instruction
Stephen	Adkison	Instructor	\$45,000.00	8/16/2025	F00159	240000 Ellis College
Marck	Beggs	Instructor	\$45,000.00	8/16/2025	F00093	240000 College of Pef. Arts & Soc. Science
Austin	Simms	Lecturer	\$30,000.00	8/16/2025	F00172	250000 Aviation, Science, and Nursing
Rebecca	Parnell	Assistant Professor	\$23,333.00	9/16/2025	F00148	250100 Nursing
Carol	Carter	Lecturer	\$12,000.00	8/16/2025	F00001	250100 Nursing
Deedra	Stofer	Lecturer	\$12,000.00	8/16/2025	F00113	240000 College of Pef. Arts & Soc. Science
Trae	Warner	Lecturer	\$12,000.00	8/16/2025	F00034	250300 Math

**ARKANSAS STATE UNIVERSITY (A-STATE)**  
**Multi-Year Contract**  
**December 12, 2025**

**Gerwig, Brian**

Position Title: Head Coach, Women's Volleyball

Salary: \$115,000

Effective: July 1, 2025-June 30, 2029