

2025-26 **VIEWBOOK**



**ASU-BEEBE**  
[www.ASUB.edu](http://www.ASUB.edu)

# **ASU-BEEBE** **VANGUARD**

**Be more than you ever imagined.**

# ASU-BE **YOU!**

BE READY. BE INSPIRED. BE DRIVEN. BE TOGETHER.

**YOUR journey starts here!**

Gain the skills and confidence to take your next step—whether that's transferring to a four-year university, launching your career, or leveling up at your current job.

At ASU-Beebe, you'll discover the important things that move you closer to your goals and dreams. From hands-on learning and real-world experience to global opportunities and meaningful connections beyond the classroom.



**Find your thing.**



# AFFORDABLE EDUCATION CLOSE TO HOME

ASU-BEEBE VS. FOUR-YEAR PUBLIC COLLEGE AVERAGE COST  
PER SEMESTER

ASU-BEEBE  
FINANCIAL AID  
CODE TO ADD  
TO YOUR FAFSA  
**001091**

## ASU-BEEBE

Tuition: \$2,100  
Fees: \$3\*

Housing + Meal Plan:  
(optional) \$3,275

TOTAL: **\$5,375**

## FOUR-YEAR PUBLIC COLLEGE

Tuition: \$4,256  
Fees: \$1,555

Housing + Meal Plan:  
(optional) \$4,905

TOTAL: **\$10,716**

**Source:** [www.adhe.edu](http://www.adhe.edu). The average price of public four-year universities in Arkansas is based on fall 2025 tuition, mandatory fees and room & board rates as published on individual college websites. Tuition and fee amounts are calculated based on a 15-credit hour course load.

\*Beebe campus classes only per credit hour

**GET STARTED!**



# ONE COLLEGE FOUR CAMPUSES

BEEBE | HEBER SPRINGS | SEARCY | LRAFB



**BEEBE** 1000 W. IOWA ST. | 501-882-3600



## HEBER SPRINGS

101 RIVERCREST DR.  
501-362-1100



## EACH CAMPUS OFFERS SOMETHING UNIQUE.

- Full college experience with housing and student life
- Scenic, close-knit, and career-focused
- Hands-on training for in-demand careers
- Flexible, mission-ready education for military and community

**ONE college. MANY paths. YOUR future.**



## SEARCY

1800 E. MOORE AVE.  
501-207-6200



## LRAFB

1490 VANDENBERG BLVD.,  
STE. 115 | 501-882-4581





# ASU-BEEBE PART OF SOMETHING BIGGER.

## TRANSFORMING LIVES

As Arkansas' oldest comprehensive community college, ASU-Beebe has been transforming lives for nearly 100 years. Whether you're training for a high-paying career or preparing to transfer to a four-year university, ASU-Beebe is where futures are built.



**SMALLER CLASSES  
BIGGER IMPACT**

*Personalized learning  
experiences*

At ASU-Beebe, classes max out at 32 students and labs at 24—so you get personal attention, hands-on support and a strong foundation for your future.

ASK ABOUT

*Precision Ag*

**Learn on a  
REAL WORKING FARM**

ASU-Beebe is HOME to the only two-year college in Arkansas with a full farm—300 acres of hands-on experience that prepares you to transfer or launch your career.

ASU-Beebe has the only Veterinary Tech program in Arkansas.



ASU-Beebe is home to the only John Deere Agriculture Equipment Technology program in Arkansas.

**John Deere Tech**



## Find YOUR artistic voice!

Students can shape their education around their passion while gaining practical, real-world experience in the arts.

**HEALTH SCIENCES**

*Carers that care start here.*



Prepare for high-demand healthcare roles through hands-on training and classroom instruction.

Whether pursuing nursing, emergency medical services, or other allied health careers, you'll gain real-world skills that make a real difference.

# 2+2 TRANSFER

## 150+ AGREEMENTS WITH 4-YEAR UNIVERSITIES



**46%** OF ALL  
bachelor's degrees earned by  
students, started at a  
community college!



# DEGREES & CERTIFICATES

**ASU-BEEBE**  
transforms lives  
— starting with  
yours.



## ARTS & HUMANITIES

### Associate of Arts

Liberal Arts    ★

### Associate of Science

Education     
Liberal Arts & Sci.   ★

### Associate of Applied Science

Early Childhood Edu. (Pre-K)  ★

### Associate of Fine Arts

Creative Arts Enterprise   
Graphic Design   
Music   
Theatre 

**Assoc. of Gen. Studies**    ★

### Technical Certificate

Early Childhood Edu. (Pre-K)  ★  
General Studies     ★  
Teaching    ★

## Certificate of Proficiency

Early Childhood Edu. (Pre-K)    ★  
Teaching    ★

## CAREER EDUCATION

### Associate of Science

Agriculture   
Business   ★  
Criminal Justice   ★


### Pre-Professional


### Technology Pathway

Pre-Engineering, Career Tech.  ★

### Associate of Applied Science

Ag. Equip. Tech. (John Deere)  ★  
Automotive Technology  ★  
Business Tech.-Comp. Apps   ★  
Business Tech.-Management   ★  
General Technology    ★  
Comp. - Aided Draft & Design   ★  
Computerized Machining Tech.  ★  
Computer Sys. & Networking Tech.  ★  
Criminal Justice  ★  
Welding Technology  

 = Offered at our **Beebe** Campus

 = Offered at our **Heber Springs** Campus

 = Offered at our **Little Rock AFB** Campus

 = Offered at our **Searcy** Campus

 = Offered **Online**

 = Offered as **Hybrid Classroom**  
(combination in-person + online)



## Technical Certificates

- Agriculture
- Air-Conditioning/HVAC
- Automotive Technology
- Community Policing
- Computerized Machining Tech.
- Computer Information Systems
- Computer Sys. & Networking Tech.
- Criminal Investigative Science
- Diesel Technology
- Entrepreneurship
- Industrial Technology
- Law Enforcement
- Marine Technology
- Mechanical Drafting
- Power Sports Technology
- Public Safety
- Welding Technology
- Wildlife Enforcement Officer

## Certificate of Proficiency

- 2-D Comp.-Aided Draft. & Design
- Air-Conditioning/HVAC
- Automotive Technology
- Computer Coding
- Computer Machining Tech.

- Community Policing
- Computer Fundamentals
- Criminal Investigative Science
- Diesel Technology
- Industrial Technology
- Law Enforcement
- Marine Technology
- Power Sports Technology
- Welding Technology
- Wildlife Enforcement

## MATH & SCIENCE

### Associate of Science

- Health Sciences

### Pre-Professional Pathways

- Dental Hygiene
- Engineering
- Nursing - BSN
- Pharmacy
- Pre-Veterinary Science
- Radiography/Sonography
- Physical Therapy

### Associate of Applied Sciences

- Emergency Med. Service-Paramedics
- Medical Laboratory Technology

- Medical Records & Health Info.
- Nursing (LPN/Paramedic to RN)
- Pharmacy Technician
- Veterinary Technology

## Technical Certificates

- Emergency Medical Tech.
- Health Information Technology
- Paramedics
- Pharmacy Technician
- Practical Nursing
- Pre-Healthcare Studies

## Certificate of Proficiency

- Emergency Medical Technician
- Advanced Emergency Med. Tech.
- Health Information Tech.
- Patient Care Technician
- Pharmacy Tech.
- Medication Assistant

Beyond  
The  
Basics!



# SCHOLARSHIPS HELPING YOU AFFORD YOUR COLLEGE EXPERIENCE!

*Academic scholarships start at a 21 ACT*

HONORS PROGRAM SCHOLARSHIP

LEADERSHIP SCHOLARSHIP

PRIVATE FOUNDATION SCHOLARSHIPS

ART, MUSIC, & THEATRE SCHOLARSHIPS



# AR FUTURE

STATE COMPLETION GRANT

## FOR 80+ ASU-BEEBE CREDENTIALS & DEGREES

*PAYS THE BALANCE OF TUITION & MANDATORY FEES (AFTER FEDERAL AND STATE AID)*



# ASU-BE EXTRAORDINARY

BE CURIOUS. BE A LEADER. BE GLOBAL. BE YOU.





## STUDENT LEADERS

Lead with purpose and earn \$1,500/year through the Student Leadership Experience and Leadership Scholars program.



## PHI THETA KAPPA

Be part of the national honor society for two-year colleges offering scholarships, leadership training and service opportunities.



## HONORS PROGRAM

Take your education further with small, challenging classes, \$500/semester scholarships and graduate with honors distinction.



## GLOBAL TRAVEL

Make the world your classroom with faculty-led travel to places like Norway, El Salvador and many destinations across the U.S.

**AT ASU-BEEBE, YOU DON'T JUST GO TO COLLEGE—  
YOU EXPERIENCE IT.**

**ASU-BE A LEADER!**





# ASU-BE THE CHANGE.

Vibrant and welcoming—with clubs, events and service opportunities that help you grow and have fun. From movie nights and concerts to cookouts and trips, there's always something happening.

**At ASU-Beebe, student life isn't just what you do—it's who you become.**



*Friendships & memories  
that last a lifetime!*



**CAMPUSLIFE**



# GET INVOLVED

**THERE IS SOMETHING HERE FOR YOU!**

20+ ACTIVE CLUBS & ORGANIZATIONS

ACADEMICS/PROGRAMS

ART GALLERY

DISC GOLF

ESPORTS

INTRAMURALS

OUTDOOR CHESS & CHECKERS

PERFORMING ARTS

PTK HONOR SOCIETY

SERVICE & PHILANTHROPY

STUDENT ACTIVITIES

ROTC

THEATRE

WALKING/BIKE TRAILS



# CAMPUS HOUSING

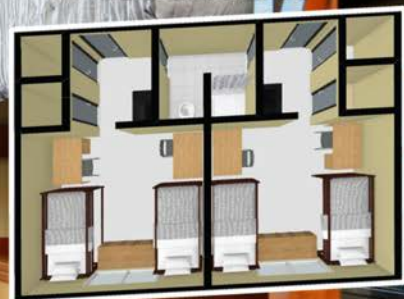
## LIVE WHERE YOU LEARN.

Experience the best in campus living! Both of our residence halls offer 100% suite-style comfort, putting you just steps from your classes, campus events, and the café.

And with an all-access meal plan included for all on-campus residents, convenience and community are always on the menu.



SINGLE-ROOM FLOOR PLAN



DOUBLE-ROOM FLOOR PLAN

GET THE FULL COLLEGE EXPERIENCE





# OUR DOORS ARE ALWAYS OPEN

**TO HELP YOU REACH YOUR PERSONAL  
AND ACADEMIC GOALS.**

**SUPPORT SERVICES**



24/7 TUTORING  
ADVISING & LEARNING CENTER  
CAREER & TRANSFER SERVICES  
COUNSELING RESOURCES  
DISABILITY SERVICES  
NEW STUDENT ORIENTATION  
TRIO  
VETERAN SERVICES

**AT ASU-BEEBE, YOU'LL FIND THE  
RESOURCES OF A LARGE INSTITUTION—  
WITH THE CARE, SUPPORT, AND SENSE  
OF HOME YOU DESERVE.**

We believe in your tenacity, your perspective and your ambition. This is the perfect launching pad to **SHOW THE WORLD YOU HAVE WHATEVER IT TAKES.**

# APPLY NOW

## STEP ONE *Apply*

Fill out your FREE application for admission

## STEP TWO *Submit*

Submit your placement scores, immunization records, and official transcripts

## STEP THREE *Finance*

File your FAFSA and apply for scholarships



#ASUBeebe     

501-882-3600 | [admissions@ASUB.edu](mailto:admissions@ASUB.edu)